

Crescent Lawn Tennis and Croquet Club
1905 to 2005 and beyond
A history of the first 100 years.
By John Cook and Graham Watson

Crescent Farm and surrounding area in 1905.



(X) Then the cowshed. Subsequently Rugby clubhouse.

A history of the first 100 years.

The Boer war was over for three years, it must have been idyllic living in a small town in the country (population about 6,000) with your own private tennis club. Women's emancipation has not arrived and ladies were not, at first, permitted to join. However, this was later rectified as the 1912 photo shows.

Documentation on the club is scarce, particularly for the early years but, surprisingly, also for comparatively recent times. Luckily, Henry Ford (Chairman 1952 to 1972) was alert to this problem and collected all the past material he could muster. He also kept a record of everything that happened during his time in office and it is thanks entirely to him that this booklet is possible. Sadly, nobody had the foresight to continue where he left off.

It is obvious from annual reports and committee minutes that dozens of people have spent countless hours working to sustain and develop the club. Some have had the satisfaction of creating improvements, others have just been able to keep the club afloat, and some have seen their achievements negated. Other than the more publicised Chairmen and Secretaries countless people have laboured as Treasurer, Social and Match Secretaries, Team Captains etc. It is obviously impossible to mention everyone, indeed many are unknown, but it is entirely through their efforts that the club exists today.

Anyone who feels left out should know that they are covered by this general expression of gratitude.

The following information came from the aforementioned Henry Ford who remembered reading it in old minute book which was subsequently destroyed by flooding.

In 1905 several gentlemen decided to contribute 10 guineas¹ each to form the Crescent Lawn Tennis and Croquet Club. Obviously, this was not an inconsiderable sum in those days. The was to be located on Crescent Farm, owned by Mr Fisher, where Sidcup Cricket and Sidcup Rugby Football Club were already playing.

Some members were charged with procuring stop netting 6ft high from Gamages² at a cost of 1shilling a yard. Deckchairs were purchased at 1s 11d each³. A full-time groundsman was employed at 30 shillings a week. Ball boys could be hired for 1penny a day. A few years later a ball was held in the village. Tickets cost 7shillings and 6pence. Chaperones were 2 shillings and 6 pence each. Carriages at 1.30am.

A complaint was made to Mr Fisher that his sheep were wandering onto the courts. The Cricket Club was requested not to loft balls onto the croquet lawn.

¹ 21 shillings in old money, £1.05 in new money. Old money was 12 pennies to the shilling and 20 shillings to the pound.

² Gamages was a department store in Holborn, it closed in 1972

³ 1 shilling 11 pence in old money 9.5 pence in new money

The only mention of croquet that can be found is that it was of a high standard and matches were played against other clubs.

The two other clubs playing at Crescent Farm beat the club to its centenary – Sidcup Cricket Club was founded in 1877. W. G. Grace played for Eltham against them aged 63.

Sidcup Football Club (R.F.U.) was founded in 1883. Players changed at a public house and were taken to the ground in horse-drawn vehicles.

A clubhouse was procured sometime between 1905 and 1912 when it appears in this photograph. It was brought from West Wickham on a farm cart and located where the equipment shed now is.⁴

Note the croquet hoop.



⁴ This is now where the groundsman keeps his equipment, behind what are now courts 3&4

Here it is again in this photograph taken on Finals Day 1932



Mrs Katie Lunn is holding the Jackson Challenge Bowl and Mr P. E. de Souza the Johnson Challenge Cup. The latter was a Wimbledon player who joined the club in 1926. These trophies are still competed for today.⁵

⁵ Jackson Challenge Bowl is awarded to the Ladies singles champion. The Johnson Challenge Cup is awarded to the Gentlemen's singles champion.

The Crescent Lawn Tennis & Croquet Club, SIDCUP.

THE (ANNUAL) GENERAL MEETING for the Twenty-Eighth Season
will be held at the PUBLIC HALL, (Committee Room) SIDCUP,
on WEDNESDAY, 14th DECEMBER, 1932, at 8.30 p.m.

President—

THOMAS GOLDNEY, Esq., C.C.

Vice-Presidents—

F. ELLAM.

F. T. JACKSON.

A. R. MARCHANT.

F. FIELD.

E. DE M. RUDOLF.

Hon. Auditors—

F. W. FINCH and LEO PARKERWOOD.

General Committee—

H. M. ARTHUR.

H. P. MORLE.

C. P. HILL.

S. B. STOCK.

C. W. J. LING.

K. R. WRIGHT.

Hon. Treasurer—

ARTHUR G. DAVIDSON.

Hon. Secretary—

ALAN M. GOLDNEY.

REPORT.

Your Committee begs to submit its Report, together with the annexed Statement of Accounts, for the Year ending 31st October, 1932.

The Johnson Championship Cup (Men's) was won by Mr. P. F. de Souza.

Mr. F. T. Jackson's Challenge Bowl (Ladies) was won by Miss Lunn.

Especial thanks are due to the Ladies of the Club for the efficient manner in which the tea arrangements were carried out during the season.

Members will be pleased to observe that the Balance in hand compares favourably with last season, and is sufficient to meet the winter expenses.

It is hoped that a Club Dance will be arranged early in the New Year.

During the season the usual Tournaments were held under the able management of Mr. K. R. Wright, who has consented to carry on with the good work.

The Committee feel that, in the interest of the Club, all Members should attend the Annual General Meeting and support their Committee.

Attention of Members is drawn to Rule 16: "That any Member desiring to resign, or any playing Member wishing to become an Hon. Member, shall signify his or her intention to the Hon. Secretary by letter before the General Meeting, or otherwise he or she will be liable for the current year's subscription."

Also Rule 14: "That all subscriptions shall be paid not later than the 31st May in each year; any Member being in default after that date may have his or her name posted in the Pavilion. No new Member shall have the privileges of the Club until the entrance fee and subscription for the year of election shall have been paid."

Provided the weather is suitable, the Ground will be opened for play on Saturday, 29th April, 1933.

All the Officers of the Club retire, in accordance with Rule 3, and are eligible for re-election.

ALAN M. GOLDNEY,

Hon. Secretary.

The Crescent Lawn Tennis and Croquet Club.

Receipts and Payments Accounts from 1st November, 1931, to
31st October, 1932.

RECEIPTS.				PAYMENTS.					
	£	s.	d.	£	s.	d.	£	s.	d.
November 1st, 1931—							October 31st, 1932—		
To Balance brought forward			130	8	7		By Rent	45	0
To SUBSCRIPTIONS—							.. Labour	128	13
Vice-Presidents ...	5	15	0				.. Rates	3	13
Playing Members—							.. Water	2	16
Tennis ...	226	10	0				.. Income Tax	3	0
Croquet ...	14	0	0					183	3
Honorary Members	9	0	0				.. Repairs, Renewals and Upkeep of Equipment	28	2
			255	5	0		.. Miscellaneous Re- pairs and Upkeep Materials	55	10
.. Entrance Fees ...			25	4	0			83	13
.. Periodical Tickets ...			4	2	6		.. Balls (nett) ...	31	7
.. Visitors' Fees ...			2	7	0		.. Printing, Stationery and Postages ...	5	8
.. Profit on Teas ...			11	6	11		.. Insurance ...	2	4
.. Profit on Tournaments			3	0	0		.. Sundry Expenses ...	12	9
.. Profit on Dance ...			6	15	0		.. Balance carried down—		
			435	12	0		Cash at Bank ...	116	10
							Cash in hand ...	16	10
								117	7
								9	
								£435	12
								0	
November 1st, 1932—									
To Balance brought down—									
General Fund ...	110	12	9						
Entertainment Fund	6	15	0						
			117	7	9				

ARTHUR G. DAVIDSON,
Hon. Treasurer.

We have examined the above Account with the Books and Vouchers, and we hereby
certify it to be correct.

14th November, 1932.

F. W. FINCH,
LEO PARKERWOOD, } Hon. Auditors.

The Crescent Lawn Tennis & Croquet Club, SIDCUP.

THE (ANNUAL) GENERAL MEETING for the Twenty-Ninth Season
will be held at the PUBLIC HALL, (Committee Room) SIDCUP,
on TUESDAY, 12th DECEMBER, 1933, at 8.30 p.m.

President—

THOMAS GOLDNEY, Esq., C.C.

Vice-Presidents—

F. ELLAM.

F. T. JACKSON.

F. FIELD.

A. R. MARCHANT.

Hon. Auditors—

F. W. FINCH and LEO PARKERWOOD.

General Committee—

H. M. ARTHUR.

H. P. MORLE.

C. P. HILL.

S. B. STOCK.

C. W. J. LENG.

K. R. WRIGHT.

Hon. Treasurer—

ARTHUR G. DAVIDSON.

Hon. Secretary—

ALAN M. GOLDNEY.

REPORT.

Your Committee begs to submit its Report, together with the annexed Statement of Accounts, for the Year ending 31st October, 1934.

The Johnson Championship Cup (Men's) was won by Mr. S. B. Stock.

Mr. F. T. Jackson's Challenge Bowl (Ladies') was won by Miss Kay.

The Committee wish to place on record their thanks to the Ladies of the Club for the efficient manner in which the tea arrangements were carried out during the season.

It is hoped that a Club Dance will be arranged early in the New Year, and the question of holding a Whist or Bridge Drive will be put to the meeting.

During the season the usual Tournaments were held under the able management of Mr. R. N. Bates, to whom the thanks of the Club are due.

The experiment of a ladder competition was considered a failure owing to lack of support, and, unless a general wish for its continuance is expressed, it will be dropped.

The Committee feel that, in the interest of the Club, all Members should attend the Annual General Meeting and support their Committee.

The question of the advisability of having a bar at the Club will be discussed.

Attention of Members is drawn to Rule 16: "That any Member desiring to resign, or any playing Member wishing to become an Hon. Member, shall signify his or her intention to the Hon. Secretary by letter before the General Meeting, or otherwise he or she will be liable for the current year's subscription.

Provided the weather is suitable, the ground will be opened for play on Saturday, 4th May, 1935.

The Officers of the Club and the Committee retire, in accordance with Rule 3, and are eligible for re-election, with the exception of the Hon. Treasurer and Mr. S. B. Stock, and notice is given of a request received for the appointment of a further official.

ALAN M. GOLDNEY,
Hon. Secretary.

The Crescent Lawn Tennis and Croquet Club.

Receipts and Payments Account from 1st November, 1933, to
31st October, 1934.

RECEIPTS.				PAYMENTS.			
Nov. 1st, 1933—				October 31st, 1934—			
	£	s.	d.		£	s.	d.
To Balance brought forward				By Rent	45	0	0
General Fund	85	1	11	" Labour	124	0	3
Entertainment Fund	6	15	0	" Rates	3	16	0
			91 16 11	" Water	3	14	0
.. SUBSCRIPTIONS—				" Income Tax	3	0	0
Vice-Presidents	5	15	6				179 10 3
Playing Members—				.. Repairs, Renewals and			
Tennis	207	5	0	Upkeep of Equip-	12	10	8
Croquet	22	0	0	" Miscellaneous Repairs			
Honorary Members...	9	0	0	& Upkeep Materials	21	17	2
			244 0 6				34 7 10
.. Entrance Fees			19 8 6	.. Balls (nett)			34 8 4
.. Periodical Tickets			3 10 0	.. Printing, Stationery			
.. Visitors' Fees			3 9 6	and Postages			5 7 1
.. Profit on Teas			13 11 8	.. Insurance			2 1 6
.. Profit on Tournaments			10 0	.. Sundry Expenses			10 0 10
.. " " Dance			8 18 5	.. Balance carried down—			
				General Fund	112	14	8
				Entertainment			
				Fund	6	15	0
							119 9 8
							£385 5 6
			£385 5 6				
Nov. 1st, 1934—							
To Balance brought down—							
General Fund	112	14	8				
Entertainment Fund	6	15	0				
			119 9 8				

NOTE.—The following liabilities accrue up to the
1st May, 1935:—

Wages	£	s.	d.
... ..	60	0	0
Rent, Rates, etc.	30	0	0
Renovation of Courts	35	0	0
	£125	0	0

ARTHUR G. DAVIDSON,
Hon. Treasurer.

We have examined the above Account with the Books and Vouchers, and hereby certify it to be correct.

23rd November, 1934.

F. W. FINCH,
LEO PARKERWOOD. } Hon. Auditors.

The Crescent

Lawn Tennis & Croquet Club,

SIDCUP.

THE (ANNUAL) GENERAL MEETING for the Thirtieth Season will be held at the PUBLIC HALL, (Committee Room) SIDCUP, on WEDNESDAY, 12th DECEMBER, 1934, at 8.30 p.m.

President—

F. T. JACKSON, Esq.

Vice-Presidents—

S. WILDING COLE, O.B.E.

F. FIELD.

F. ELLAM (decd.)

A. R. MARCHANT.

Hon. Auditors—

F. W. FINCH and LEO PARKERWOOD.

General Committee—

/ H. M. ARTHUR.

S. E. PEARMAN.

/ C. W. J. LENG.

S. B. STOCK.

/ H. P. MORLE.

/ K. R. WRIGHT.

Davidson
Hon. Treasurer—

Lynn
Hon. Secretary—

ARTHUR G. DAVIDSON.

ALAN M. GOLDNEY.

REPORT.

Your Committee begs to submit its Report, together with the annexed Statement of Accounts, for the Year ending 31st October, 1933.

The Johnson Championship Cup (Men's) was won by Mr. H. M. Arthur.

Mr. F. T. Jackson's Challenge Bowl (Ladies) was won by Miss Kay.

Especial thanks are due to the Ladies of the Club for the efficient manner in which the tea arrangements were carried out during the season.

Members will observe that the Balance in hand has fallen considerably, and is barely sufficient to meet the winter expenses to which attention is drawn in the Statement of Accounts, and in consequence the Committee recommend making the following alteration to Rule 14:—

"That the subscription for Playing Members be 40/-," and that the words "40- for gentlemen and 35/- for ladies" be deleted.

It is hoped that a Club Dance will be arranged early in the New Year.

During the season the usual Tournaments were held under the able management of Mr. K. R. Wright and Mr. A. T. Gundry, to whom the thanks of the Club are due.

The Committee feel that, in the interest of the Club, all Members should attend the Annual General Meeting and support their Committee.

Attention of Members is drawn to Rule 16: "That any Member desiring to resign, or any playing Member wishing to become an Hon. Member, shall signify his or her intention to the Hon. Secretary by letter before the General Meeting, or otherwise he or she will be liable for the current year's subscription."

Provided the weather is suitable, the Ground will be opened for play on Saturday, 28th April, 1934.

All the Officers of the Club retire, in accordance with Rule 3, and are eligible for re-election.

ALAN M. GOLDNEY,

Hon. Secretary.

The Crescent Lawn Tennis and Croquet Club.

Receipts and Payments Account from 1st November, 1932, to
31st October, 1933.

RECEIPTS.			PAYMENTS.		
November 1st, 1932—	£	s. d.	£	s. d.	
To Balance brought forward			October 31st, 1933—	£	s. d.
General Fund ...	110	12 9	By Rent ...	45	0 0
Entertainment Fund	6	15 0	" Labour ...	122	17 6
		117 7 9	" Rates ...	3	12 8
.. SUBSCRIPTIONS—			" Water ...	2	18 4
Vice-Presidents ...	5	16 0	" Income Tax ...	3	0 0
Playing Members—					177 8 6
Tennis ...	199	10 0	" Repairs, Renewals and Upkeep of Equipment ...	30	8 9
Croquet ...	19	5 0	" Miscellaneous Re- pairs and Upkeep Materials ...	32	18 2
Honorary Members	11	0 0			63 6 11
		235 11 0	" Balls (nett) ...		38 10 11
.. Entrance Fees ...		16 16 0	" Printing, Stationery and Postages ...		6 0 10
.. Periodical Tickets ...		2 15 0	" Insurance ...		2 1 3
.. Visitors' Fees ...		3 15 0	" Sundry Expenses ...		14 5 5
.. Profit on Teas ...		16 10 0	" Balance carried down—		
.. Profit on Tournaments		16 0	General Fund ...	85	1 11
		£393 10 9	Entertainment Fund ...	6	15 0
					91 16 11
					£393 10 9
Nov. 1st, 1933—					
To Balance brought down—					
General Fund ...	85	1 11			
Entertainment Fund ...	6	15 0			
		91 16 11			

NOTE.—The following liabilities accrue up to the
1st May, 1934:—

Wages ...	£	s. d.
Rent, Rates, etc. ...	60	0 0
	30	0 0
	£90	0 0

ARTHUR G. DAVIDSON,
Hon. Treasurer.

We have examined the above Account with the Books and Vouchers, and hereby certify
it to be correct.

28th November, 1933.

F. W. FINCH,
LEO PARKERWOOD, } Hon. Auditors.

The Crescent

Lawn Tennis & Croquet Club,

SIDCUP.

THE (ANNUAL) GENERAL MEETING for the Thirty-first Season will
be held at the PUBLIC HALL, (Committee Room) SIDCUP, on
WEDNESDAY, 4th DECEMBER, 1935, at 8.30 p.m.

President—

F. T. JACKSON, Esq.

Vice-Presidents—

S. WILDING COLE, O.B.E.

C. P. HILL.

F. FIELD.

A. R. MARCHANT.

A. T. GUNDRY.

F. S. NEAME.

Hon. Auditors—

F. W. FINCH and LEO PARKERWOOD.

General Committee—

H. M. ARTHUR.

J. LUNN.

A. G. DAVIDSON.

H. P. MORLE.

C. W. J. LENG.

K. R. WRIGHT.

Hon. Treasurer—

S. E. PEARMAN.

Hon. Secretary—

ALAN M. GOLDNEY.

Asst. Hon. Secretary—

PETER BATES.

REPORT.

Your Committee begs to submit its Report, together with the annexed Statement of Accounts, for the Year ending 31st October, 1935.

The Johnson Championship Cup (Men's) was won by Mr. Arthur Gundry.

Mr. F. T. Jackson's Challenge Bowl (Ladies') was won by Miss Bahm.

The Committee wish to place on record their thanks to the Ladies of the Club for the efficient manner in which the tea arrangements were carried out during the season.

A Whist Drive will be held on January 18th, 1936, and it is hoped that it will be supported by Members.

During the season the usual Tournaments were held under the able management of Mr. Peter Bates, to whom the thanks of the Club are due.

The Committee feel that, in the interest of the Club, all Members should attend the Annual General Meeting and support their Committee.

The experiment of having a bar at the Club proved a success, and the thanks of the Club are due to Messrs. Clague and A. Gundry for the efficient manner in which it was run.

Attention of Members is drawn to Rule 16: "That any Member desiring to resign, or any playing Member wishing to become an Hon. Member, shall signify his or her intention to the Hon. Secretary by letter before the General Meeting, or otherwise he or she will be liable for the current year's subscription.

The Committee recommend that the following words be added to Rule 14:—"That the entrance fee of £1 1s. 0d. shall cover all members of one family.

Provided the weather is suitable, the ground will be opened for play on Saturday, 2nd May, 1936.

The Officers of the Club and the Committee retire, in accordance with Rule 3, and are eligible for re-election.

ALAN M. GOLDNEY, *Hon. Secretary.*

PETER BATES, *Asst. Hon. Secretary.*

The Crescent Lawn Tennis and Croquet Club.

Receipts and Payments Account from 1st November, 1934, to
31st October, 1935.

RECEIPTS.				PAYMENTS.			
	£	s.	d.		£	s.	d.
Nov. 1st, 1934—				Oct. 31st, 1935—			
To Balance brought forward				By Rent	45	0	0
General Fund	112	14	8	" Labour	120	8	10
Entertainment Fund	6	15	0	" Rates	4	0	0
			119 9 8	" Water	2	12	11
.. SUBSCRIPTIONS—				" Income Tax	2	14	0
Vice-Presidents	5	14	6				174 15 9
				.. Repairs, Renewals and			
Ladies	129	0	0	Upkeep of Equip-	69	9	0
Gent's	70	0	0	ment			
			199 0 0	.. Miscellaneous Equip-	20	0	4
Croquet	16	0	0	ment			89 9 4
Honorary Members... ..	11	5	0	.. Balls (nett)			38 1 3
			231 19 6	.. Printing, Stationery &			
.. Entrance Fees... ..			12 12 0	Postages			8 7 2
.. Periodical Tickets			4 10 0	.. Insurance			2 13 2
.. Visitors' Fees			3 16 0	.. Sundry Expenses			10 4 11
.. Profit on Teas			10 8 4				323 11 7
.. " " Dance			2 17 6	.. Balance carried down—			
.. " " Whist Drive			12 0 4	General Fund	79	8	6
.. " " Refreshment				Entertainment			
Room			12 1 9	Fund	6	15	0
							86 3 6
			£409 15 1				£409 15 1

Nov. 1st 1935—			
To Balance brought down—			
General Fund	79	8	6
Entertainment Fund	6	15	0
			86 3 6

NOTE.—The following liabilities accrue up to the 1st May, 1936:—

	£	s.	d.
Wages... ..	60	0	0
Rent, Rates, etc.	30	0	0
Renovation of Courts	30	0	0
			£120 0 0

S. E. PEARMAN,

Hon. Treasurer.

Examined and found correct,

F. W. FINCH,

LEO PARKERWOOD,

Hon. Auditors.

18th November, 1935.

The Crescent Lawn Tennis & Croquet Club, SIDCUP.

THE (ANNUAL) GENERAL MEETING for the Thirty-Fourth Season will
be held at the PUBLIC HALL, (Committee Room) SIDCUP, on
WEDNESDAY, 14th DECEMBER, 1938, at 8.30 p.m.

President—

S. WILDING COLE, O.B.E.

Vice-Presidents—

A. G. DAVIDSON.

F. FIELD.

C. U. FISHER.

A. T. GUNDRY.

C. P. HILL.

F. T. JACKSON.

A. R. MARCHANT.

F. S. NEAME.

Hon. Auditors—

F. W. FINCH and LEO PARKERWOOD.

General Committee—

C. W. J. LENG.

J. LUNN.

G. D. MAYS.

P. MORREY.

H. P. MORLE.

K. R. WRIGHT.

Hon. Treasurer—

H. M. ARTHUR,
9, St. John's Road,
Sidcup.

Hon. Secretary—

ALAN M. GOLDNEY,
Clifton Down,
Priory Close, Chislehurst.

• *Asst. Hon. Secretary—*

PETER BATES,
47, Walton Road,
Sidcup.

REPORT.

Your Committee begs to submit its Report, together with the annexed Statement of Accounts, for the Year ending 31st October, 1938.

The Johnson Championship Cup (Men's) was won by Mr. A. Gundry.

Mr. F. T. Jackson's Challenge Bowl (Ladies') was won by Miss E. Wright.

The Committee wish to place on record their thanks to the Ladies' Tea Committee for the efficient manner in which the tea arrangements were carried out during the season.

A Whist Drive, it is hoped, will be held early in the New Year, and the Committee trust that it will be supported by Members.

The two new courts will be available for play throughout the season.

Members are earnestly requested to make a special effort to attend the Annual General Meeting in order that ideas and suggestions may be fully discussed.

Attention of Members is drawn to Rule 16: "That any Member desiring to resign, or any playing Member wishing to become an Hon. Member, shall signify his or her intention to the Hon. Secretary by letter before the General Meeting, or otherwise he or she will be liable for the current year's subscription.

Particular attention is drawn to Rule 17 *re* Visitors, which will in future be rigidly enforced.

Provided the weather is suitable, the ground will be opened for play on Saturday, 6th May, 1939.

The Officers of the Club and the Committee retire, in accordance with Rule 3, and are eligible for re-election, with the exception of Mr. P. Bates, who has expressed a wish to retire. The Committee regret that Mr. N. Wright found it necessary to resign during the season, and his place was filled by Mr. G. D. Mays.

ALAN M. GOLDNEY, *Hon. Secretary.*

PETER BATES, *Asst. Hon. Secretary.*

THE CRESCENT LAWN TENNIS AND CROQUET CLUB.

Receipts and Payments Account from 1st November, 1937, to
31st October, 1938.

RECEIPTS.			PAYMENTS.		
	£	s. d.		£	s. d.
Nov. 1st, 1937.			October 31st, 1938.		
To Balance forward	70	4 8	By Rent	45	0 0
Less credits to be received	57	16 6	.. Labour	176	6 8
		12 8 2	.. Rates	10	14 6
.. SUBSCRIPTIONS—			.. Water Rate	4	0 4
President and Vice-			.. Income Tax	3	0 0
Presidents	7	1 0			239 1 6
Ladies	140	0 0	.. Repairs	51	18 0
Gent's	86	5 0	.. Bails	36	6 0
Croquet	6	0 0	.. Printing	4	12 4
Hon. Members	15	15 0	.. Insurance	1	17 3
		254 1 0	.. Bank Interest	2	3 10
Entrance Fees	22	1 0	.. Sundry Expenses	45	0 9
Period Tickets	2	0 0			141 18 2
Visitors' Fees	2	16 0	.. Balance carried down		1 17 5
Profit on Teas	6	7 2			5-13-0
" Pin Table	1	1 9			
" Whist Drive	5	13 4			
" Dances	9	6 5			
" Refreshments	16	12 8			
" Sundry Receipts	50	9 7			
		116 7 11			
This total includes subscriptions etc., amounting to £57 16s. 6d. for the year 1936/37 as above.	£382	17 1			£382 17 1
Nov. 1st, 1938.					
To Balance brought down		1 17 5			

H. M. ARTHUR, Hon. Treasurer.

66
154
310
262-9
47-11
5-13-0
53 4-5

Audited and found correct.

F. W. FINCH,

LEO. PARKERWOOD,

Hon. Auditors.

14th November, 1938.

Mr Arthur Johnson presented his cup tin 1910 and Mr F. T. Jackson his bowl in 1923. Unfortunately, it is not known who Mr Johnson was. The only record we have of Mr Jackson shows him as Vice President in 1933 and President in 1934.

Other than the winners, the only other person who can be named in the photograph is the gentleman on the right, Hugh Morle, who was still a playing member in the 1950s (see Later).

Another building in the Tennis Club area was a small concrete shed which was used as a bar from at least the 1950s onwards. It was probably originally a farm building. It can still be seen behind court 1 (now court 4).

It conveniently had small windows which could be blacked out after closing time. Some of the rugby players used to come round on Saturdays and there was much drinking until the early hours.

There was also a tiny little hut to the right of the verandah. It was used for years for afternoon bridge - four people just fitted in. In the 1960s it was allocated to the juniors who could squeeze in about twenty! Later destroyed by fire.

August 1940. Probably another Finals Day



A surprisingly calm scene considering the Battle of Britain raged overhead on most days of the late summer and autumn.

The third gentleman from the left is Mr Cecil Leng. He was a member for 40 years and died in 1971 he had been President for over 20. It was thanks to his efforts that the club remained open through the war years and the courts were maintained. He donated the Men's Doubles handicap trophy. Incidentally, he was a Field-Marshal of the Royal Blackheath Golf Club and his portrait in the traditional red uniform is in their clubhouse.

The gentleman on the far right is Mr C. B. Catchpole who continued as a prominent member into the 1950s.

The fourth gentleman from the right is Hugh Morle; mentioned later.

1948

This was a very important year for the club because the three constituent clubs joined together to form Sidcup Sports Club, the objects of the Club to be "To promote and encourage the playing of amateur games at Crescent Farm Sidcup, with special regard to Cricket, Lawn Tennis and Rugby Football and to further in every way the interests of the constituent clubs..."

To preserve the continuity of these development we need to defer mention of intermediate events described in this history, to come to an even more important year, 1959, when, thanks to the enormous efforts of the Secretary of SSC, Mr Rowland Hill, and his committee, it became possible to purchase the freehold of the land from Mr Fisher with funds provided by all three clubs. Mr Fisher was a member of the Tennis Club and it is thought that this resulted in the negotiation of a favorable price.

1949

Here is a cutting from the "Kentish Times" of July 1949 reporting the success of Morle and Gundry in winning the doubles, which they did several times. This was a high standard tournament taken very seriously by local clubs.

Hugh Morle appears in the 1932 photograph. We was a committee member from the early days. Men's captain, match secretary etc. More of Arthur Gundry later.

BIG CROWD AT TENNIS FINALS SUCCESS OF CHISLEHURST – SIDCUP TOURNAMENT

Chislehurst – Sidcup's eight annual amateur tennis tournament was conclude at Sidcup Place in a blaze of glory (writes a 'Kentish Times' reporter). Not only was the weather brilliant and in keeping with that which had prevailed since the opening of the tournament on June 30, but the seven finals provided keen and interesting contests.

Mr Gordan Udal, J.P. (Chairman of Chislehurst-Sidcup Urban District Council) and Mrs Udall, with a number of councillors and donors of trophies, were among the biggest crowd ever attracted to this annual event. The interest which the public have evinced all through has been a feature of the tournament.

There was some outstanding achievements in the tournament, foremost being that W. A. Hare (Knoll L.T.C., Orpington). He won the men's singles and the mixed doubles (in partnership with Mrs Marchant), and was also runner up in the men's doubles (partnered by S. Drew).

Another fine performance was put up my Mrs. Joyce Wates (Sidcup Recreation Club) in winning the ladies' singles for fifth time, her previous success being 1942, 1943, 1944 and 1945. In addition she was runner up in the mixed doubles with her husband (G.E. Wates) as partner.

Miss M. Ellingworth (Lamorby LTC) had the distinction of being the only champion to retain her title. She won the girls singles.

SEMI-FINALS

An incident occurred in the men's singles semi-final between D. M. Reeley and J. Lavis on Thursday evening, the latter colliding with the wire netting and sustaining a cut arm which necessitated retirement from the competition. Reeley won the first set 8-6, Lavis the second 6-4 and Reeley led 4-1 in the third. In the ladies' doubles Mrs Lavis and Mrs Melrose beat Mrs Wates and Miss Robinson (holders) 6-6, 6-4, 6-3: and in the mixed doubles W. A Hare and Mrs Marchant beat R Whittaker and Mrs D. Hawes 6-3, 6-2.

Friday's semi-finals resulted in Miss E. Britten beating Mrs Lavis 5-6, 6-3, 6-1, and Mrs Wates beating Miss J Guy 6-3,

6-3 in the ladies' singles. W. A. Hare beating W. Buckle 6-1, 6-2 in the men's singles and H. P. Morle and A. Gundry beating G. E. Wates and E. R. Wates 6-0, 6-4 in the men's doubles.

Ladies' doubles (E. V. Millis Cup) Mrs D. Hawes (Sidcup Recreation Club) and Mrs D. Evans (Lamorby LTC) teamed up for the this event in which their opponents were Mrs Davis and Mrs Melrose (Standard Telephones).

Of four steady players Mrs Lavis excelled and turned the scale in her side's favour to give them a 6-3, 6-2 victory. Umpire: Mr V. G. Travis.

Men's doubles ("Kentish Times Cup") - The clash between W. A. Hare and S. Drew (Knoll Orpington) and H. P. Morle and A. Gundry (Crescent Sidcup) promised the most exciting game of the day. Hard hitting was a feature but this was never at the expense of the finer points of the game. The Orpington pair took the first set 6-1, but Morle and Gundry ran out for the second and won 6-2, and after brilliant exchanges won the decider 6-3. Umpire Mr J. E Evans.

1949.

Kentish Times

Gadsby's

 WE SHALL BE
CLEARING ODDMENTS
 in GOWNS, COATS, etc.
 from **FRIDAY, August 5th, onwards**
27, HIGH STREET, SIDCUP

AI

Registered at General Post Office as a newspaper. Postage inland 1½d.

TEN PAGES—THREEPENCE

BIG CROWD AT TENNIS FINALS

SUCCESS OF CHISLEHURST-SIDCUP TOURNAMENT

Chislehurst-Sidcup's eighth annual amateur tennis tournament was concluded at Sidcup Place on Saturday in a blaze of glory (writes a "Kentish Times" reporter). Not only was the weather brilliant and in keeping with that which had prevailed since the opening of the tournament on June 30, but the seven finals provided keen and interesting contests.

Mr. Gordon Udall, J.P. (Chairman of Chislehurst-Sidcup Urban District Council) and Mrs. Udall, with a number of councillors and donors of trophies, were among the biggest crowd ever attracted to this annual event. The interest which the public have evinced all through has been a feature of the tournament.

There were some outstanding achievements in the tournament, the most being that of W. A. Hare (Knoll L.T.C., Orpington). He won the men's singles and the mixed doubles (in partnership with Mrs. Marchant), and was runner-up in the men's singles (partnered by H. Drew). Another fine performance was put up by Mrs. Joyce Waters (Sidcup Recreation Club) in winning the ladies' singles for the thirteenth consecutive year in 1943, 1945, 1944 and 45. In addition, she was runner-up in the mixed doubles with her husband (G. E. Waters) as partner. Miss M. Ellingworth (Lamorne L.T.C.) had the distinction of being the only champion to retain her title. She won the girls' singles.

SEMI-FINALS

In accident occurred in the men's semi-final between D. M. Day and J. Lewis on Thursday evening, the latter colliding with wire netting surrounding and causing a cut arm which necessitated retirement from the competition. They won the first set 6-3, Lewis won the second 6-4, and Herby led 4-1 in the third. In the ladies' doubles Mrs. Lewis and Mrs. Melrose beat Mrs. Waters and Miss Robinson 6-3, 6-4, 6-3; and in the mixed doubles W. A. Hare and Mrs. Robert beat H. Whitaker and Mrs. Hawes 6-3, 6-3.

SATURDAY'S FINALS

Miss Hildy's semi-final resulted in Miss Hildy beating Mrs. Lewis 6-3, 6-4, 6-1, and Mrs. Waters beating J. Day 6-3, 6-4 in the ladies' singles; W. A. Hare beating W. G. E. 6-1, 6-2 in the men's singles; H. E. Madsen and A. Dyer beating G. E. Waters and H. E. Watce 6-4, 6-4 in the men's doubles.

Ladies' doubles (E. V. Mills Cup).—Mrs. D. Baxter (Sidcup Recreation Club) and Mrs. D. Evans (Lamorne) teamed up for this event, in which their opponents were Mrs. Lewis and Mrs. Melrose (Standard Telephones). Of four steady players, Mrs. Lewis excelled and turned the scale in her side's favour to give them a 6-3, 6-3 victory. Umpire: Mr. V. G. Travis.

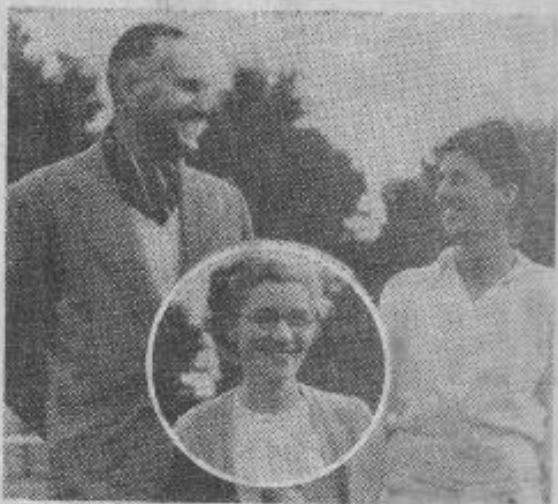
Mixed doubles ("Kentish Times" Cup).—The eighth between W. A. Hare and G. E. Waters (Knoll) and Mrs. J. Lewis and H. E. Madsen (Standard) provided the most exciting game of the day. Hare and Lewis led 1-0, 1-1, but this was never at the expense of the ladies. They took the first set 6-3, but Hare and Lewis were not able to take the second set 6-3, and after a brilliant exchange won the deciding 6-3. Umpire: Mr. J. Sanders.

Mixed doubles (Mrs. J. Robinson Cup).—Another good game was the meeting of G. E. Waters and Mrs. Waters (Sidcup Recreation Club) and W. A. Hare and Mrs. Marchant (Knoll, Orpington). Near stroke play and long rallies marked the exchanges. After the Knoll pair had won the first set 6-2, there came a great effort by the Waters. They got a 6-2 lead, but by fine team work the Knoll pair pulled up and won 6-4. Umpire: Mr. J. Sanders.

TROPHIES PRESENTED

Mr. E. J. Reader presided over the presentation of prizes, and with him were Mr. and Mrs. Udall, Mr. W. G. Fuller (Vice-Chairman of the Council) and Mrs. Fuller, Mr. T. J. Robins, Mrs. E. V. Wallace, Mr. A. J. Simmons, Mr. H. Howell (hon. secretary), and Mr. G. E. Hoath (Deputy Parks Superintendent).

Mr. Reader referred to the bigger entry and great success of the tournament.



TENNIS WINNERS.—Mr. W. A. Hare and Mrs. Marchant, who won the mixed doubles in Chislehurst-Sidcup tennis tournament at Sidcup Place on Saturday.—(K.T. Photo No. 8,994). Inset, Mrs. Waters, winner of the ladies' singles for the fifth year.—(K.T. Photo No. 8,995).

HOME HEALTH COST £203,000

£23,000 OVER K.C.C. ESTIMATE LAST YEAR

Yesterday (Thursday) it was reported at the meeting of the Kent County Council at Maidstone that the current expenditure on the Domestic Health Service in the County was at the rate of £203,000 a year, which was £23,000 more than the estimate approved by the Council.

Sir Henry D'Avigdor Goltenski, leader of the Conservative group, moved a resolution that expenditure should be kept within the limits of the estimate, but after considerable discussion this was defeated.

Mr. J. N. Bowrie (Erith East) said that this was a human service and was more important than S.A.S. and Mrs. M. N. Hetherington (Crayford) speaking of the great benefit that this service brought to old people and young mothers, declared that it was one case where money did not matter.

Mr. P. W. H. Tyrman (Orpington North) pointed out that Sir Henry did not seek to cut down on the service but that it was good finance to budget and then keep within the estimate. Sir Edward Haedy advised that the Council should...

£214 WILL AID AUSTRIAN CHILDREN

Sidcup Target Exceeded By £40

Already £214, almost £40 more than the target figure, has been raised by the local Austrian Reception Committee to finance the visit of 16 Austrian children to Sidcup for 15 weeks from the middle of September.

Of this sum, more than £155 has been raised by Sidcup Secondary School for Girls (Alma-road), £52 18s. has been contributed by Richard Klingor, Ltd., of Foots Cray, and £5 3s. by Sidcup and District Chamber of Commerce.

The firm of Richard Klingor are taking a special interest in the visit, because the business was founded in Austria about 60 years ago, and they still have friendly connections with that country. Their contribution is partly in memory of their Austrian founder.

Although they have passed the target figure, the local committee are not closing the fund, because any surplus can be used for similar visits in the future.

and H. P. Morle and A. ...
 beating G. E. Wiles and E. E. Wiles
 6-4, 9-4, in the men's doubles.

SATURDAY'S FINALS

Girls' singles (J. H. W. Evans Cup).—
 This proved to be an endurance
 test, for it took Miss M. Ellingworth
 (Chichester) and Miss A. M. Swindhurst
 (both of Lamorbey L.T.C.) over two
 hours to settle the issue. As the
 score of 6-1, 6-4, 1-3 is in favour of
 Miss Ellingworth, it is obvious that
 they were evenly matched, and both played
 well. Umpire: Mr. J. H. W. Evans.

Boys' singles (Gordon Udall Cup).—
 The game between M. Bowden
 (Lamorbey) and E. R. Wales (Sidcup
 Recreation Club) was also a some-
 what protracted affair. Wales dis-
 played some powerful strokes, but he
 had not the accuracy of Bowden, who
 was runner-up for the Kent junior
 championship in 1948. It was not
 until the third set that Bowden
 established his superiority and won
 6-4, 4-6, 6-3. Umpire: Miss M.
 Scadding.

Ladies' singles (T. J. Robins Cup).—
 Two Sidcup Recreation Club
 players met in the final, in which
 Mrs. J. Wiles defeated Miss F.
 Britten by 6-1, 6-1. Frying with
 steadiness and accuracy, Mrs. Wiles
 took the first set with surprising
 ease, but there were some door rallies
 in the second, and Miss Britten tried
 hard to retrieve the situation.
 Umpire: Mrs. W. Heath.

Mens' singles (T. J. Robins Cup).—
 W. A. Hare (Knoll, Orpington) played
 polished tennis in beating D. M.
 Hooley. By beautiful placing and
 powerful driving he took the first set
 6-1. Hooley put up stout resistance
 in the second, but Hare took the set
 at 6-4. Umpire: Mr. G. S. Wiles.

'AT TAIL END OF PARADE'

LEGION BRANCHES TO MEET BEXLEY MAYOR

Blackfen and Lamorbey British Legion have joined Welling British Legion in protesting to Bexley Council against London

Superintendent).

Mr. Reader referred to the bigger entry and great success of the tournament, and said the Council proposed to lay down hard courts in various parks, and it was hoped these would be ready for next summer. Speaking of Mr. Howell, he said there could be nothing but praise for the work of the secretary. Mr. Reader also thanked the tournament committee, Mr. Hoath, Mr. P. A. Ager (Kentish Times), umpires and ball boys. He apologised for the absence of Mr. D. M. Fielding and Mr. D. W. Child.

Mr. Udall had a word of appreciation for all who had helped towards the success of the tournament; and also for Mr. and Mrs. Higgs.

Mr. Howell thanked players for support, and asked for even greater co-operation if the competitions grew again next year.

Mrs. Udall presented the cups and replicas to the winners, and spoons to the runners-up. She was thanked by Mr. Fuller, and handed a bouquet by Susan Evans.

The prize of a box of tennis balls for the umpire officiating in most matches was awarded to Mr. V. G. Travis, and other umpires to receive similar gifts were Miss Kitting, Mrs. Heath, Mr. J. E. Evans and Mr. J. Sanders; also the ball boys. Brigadier R. E. Sealton was thanked for his help. The prize for "an outstanding performance" was awarded to Mr. J. Lavis.

The tournament committee were Messrs. D. M. Fielding (chairman), D. W. Child, F. C. Mansfield, E. J. Reader, R. A. Sanderson, and Mrs. E. V. Wallace (councillors), Messrs. J. H. W. Evans (Lamorbey), H. P. Morle (Crescent), A. J. Summers (Harland Social), G. E. Wiles (Blackfen Recreation Club), and H. B. Hill

was good finance to budget and then keep within the estimates.

Sir Edward Hardy advised that the Council should wait until a full report on the present reorganisation of the service had been submitted.

The chairman of the Health Committee, Colonel C. A. Johnston-Smith warned that if the resolution were accepted, the service would crash.

Asking Sir Henry to withdraw he said: "I know there is wangling, but I would rather have 28 cases of wangling than deprive one person who needs the service."

fund, because any surplus can be used for similar visits in the future.

Meanwhile, they are planning a series of excursions and entertainments for the visiting children, although the major part of the entertainment will be left to the individual hosts.

Princess Elizabeth and the Duke of Edinburgh are attending a special service in connection with the Playing Fields silver jubilee appeal in Kent at Canterbury Cathedral on Sunday.

A WOLSELEY
merits a craftsman's care — have yours serviced at

Crips Bros.

The Crescent Lawn Tennis Club

SEASON, 1955

Ground: Sydney Road, Sidcup.

Hon. Secretary:
ALEC R. WILLS
 32, Station Road,
 Sidcup, Kent.
 FOOTscray 5097

Hon. Match Secretary:
PETER D. HUMAN
 92, Birchwood Avenue,
 Sidcup, Kent.
 Home - FOOTscray 2111
 Office - Imperial 2600 Ext. 363

Mens' Capt:
H. P. MORLE
 FOOTscray 2711

Ladies' Capt:
MISS M. W. EASTWOOD
 FOOTscray 2711

MATCH LIST, 1955

Date	Opponents	Team	Ground	Time
May 10 Tue.	Bromley C.C. III	Ladies II ...	A	6.00
" 11 Wed.	Catford C. & L.T.C. (Kent Cup)	Ladies ...	H	6.15
" 15 Sun.	Gravesend III (Kent Cup)	Men ...	H	3.00
" 19 Thurs.	Cyphers II (Kent Cup)	Men ...	A	6.00
" 24 Tue.	Phoenix (Kent Cup)	Men ...	A	6.00
" 29 Sun.	Sydenham II (Kent Cup)	Ladies ...	H	3.00
June 4-18	Club Tournaments			
" 22 Wed.	Park Langley III (Kent Cup) ...	Ladies ...	A	6.15
" 24 Fri.	Grove Park II	Men ...	A	6.15
" 26 Sun.	Bexley II	Ladies II ...	H	3.00
" 29 Wed.	Knoll	Mixed ...	H	6.00
July 3 Sun.	Bexley II	Men II ...	A	3.00
" 5 Tue.	Sidcup Recreation II	Mixed II ...	A	6.15
" 10 Sun.	Private Banks	Men ...	H	3.00
" 15 Fri.	Knoll	Mixed ...	A	6.15
" 19 Tue.	Bromley C.C. II	Mixed ...	A	6.00
" 20 Wed.	Grove Park II	Men ...	H	6.15
" 24 Sun.	Cricketer Match v. Sidcup II			
" 26 Tue.	Inland Revenue "A"	Ladies ...	A	6.15
" 27 Wed.	Sidcup Recreation II	Mixed II ...	H	6.15
Aug. 3 Wed.	Bromley "A"	Mixed ...	H	6.00
" 10 Wed.	Inland Revenue "A"	Ladies ...	H	6.00
" 12 Fri.	Bromley C.C. III	Ladies II ...	H	6.00
" 20 Sat.	Bromley "A"	Ladies ...	A	3.00
" 20 Sat.	Bromley "A"	Men ...	H	3.00
" 28 Sun.	Bexley II	Ladies II ...	A	3.00
Sept. 4 Sun.	Bexley II	Men II ...	H	2.30
" 10 Sat.	Private Banks	Men ...	A	3.00
" 11 Sun.	Bromley C.C. II	Mixed ...	H	3.00

NOTE: Club Tournaments, Finals Day - Saturday, 18th, June.

Hon. Treasurer:

A. GUNDRY

140, Domanic Drive,
S.E.9.

ELTham 6500

Subscriptions (due 1st May) -

Vice-Presidents	15	0
Hon. Members	10	6
Hon. Members (Ladies)	5	0
Playing Members	3	3 0
Playing Members (under 19)	2	12	6	
Entrance Fee	10	6

Please note that cheques should be made payable to Crescent Lawn Tennis Club.

1955

There is no record of any celebration to mark the Golden Jubilee of the club in 1955. There is just this Greetings Telegram to the President from the wife (or widow) of Alan Goldeny, secretary from 19110 to 1945. What a record! He was given a silver cigar box when he finally gave up.



MAY 1959. OPENING OF THE FIRST HARD COURTS.

The purchase of the land this year gave confidence to lenders and guarantors and the first two hard courts (En-Tout-Cas) were constructed on the site of two very rough grass courts, now courts 3&4 (now courts 1 & 2). This gave 6 grass and 2 hard courts.



Colin Ashdown (Men's Capt)
Chris Davidson (Secretary)
Henry Ford (Chairman)
Cecil Leng (President)
E W Pitman (Chairman SSC)
Margaret Newdick (Ladies Capt)
Aurthur Gundry (Treasurer)

1960 EXTENSION OF ORIGINAL CLUBHOUSE⁶

In the summer of this year we were donated some second hand Crittal window frames. Under the direction of Geoff Herries, working parties stripped down and cut the necessary joints he had marked out on the timbers. Thus was constructed a front extension to the clubhouse, not very attractive but which more than doubled the size of the clubroom.

Geoff Herries was a member of the Tennis and Rugby clubs and was a leading member of the Development Committee of SSC which eventually was responsible for the building of the 1966 clubhouse. His photograph is in the Lumley Bar.

Later in the 1960s, Sydney Rd was resurfaced. Up to then it was pot-holed gravel. We lost a slice of our land which was an allotment alongside the courts but this reduced our share of the levy charged to us and the residents.

Here is the result of the labour. (Bar in the foreground).



The old part had many defects. There were no showers. It was riddled with woodworm. Many floorboards were rotten. One day the ladies toilet descended through the floor with occupant in situ. When the water was turned on in the spring there were always dozens of leaks and a plumber had to be in attendance.

It was always thought to be on the mains drainage but, when the houses were built behind it on the left hand side of Sydney Rd on the land surrounding the farm blacksmiths shed, a huge cesspit was discovered which had never been emptied!!

Later in the 1960s, Sydney Rd was surfaced. Up until then it was pot holed gravel. We lost a slice of land which had been an allotment alongside the courts but this reduced our share of the levy charged to us and the residents.

⁶ The original tennis club's clubhouse was behind what are now courts 3&4, and is used by the groundsman to store his equipment.

HERE IS THE 1961 MIXED TEAM IN FRONT OF THE EXTENDED CLUBHOUSE.



Tony Williams Peter Dobson John Cook Don Graves Colin Ashdown
Betty Cook Margaret Newdick Rosemary Otter.

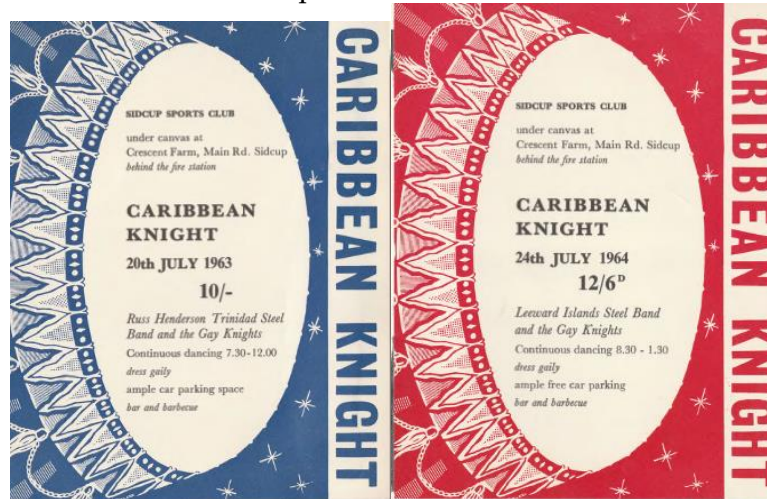
To complete, out of sequence, the history of the building:

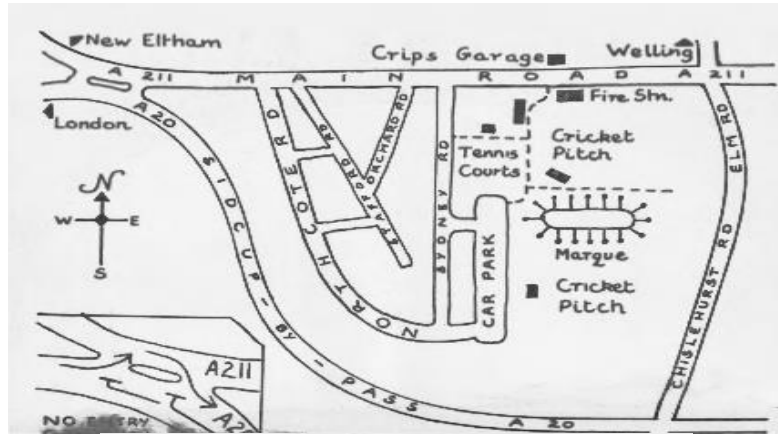
After 1966 when it was no longer needed as a clubhouse, it was used as an equipment shed and to store old newspaper which the club collected to raise funds. In 1973, as might have been expected, it caught fire and went out in a blaze of glory!!!

The SSC Development Committee, having already managed to provide a groundsman's house, (now rented out) moved onto the next target, the construction of a Clubhouse to house all the constituent clubs.

Ambitious fundraising schemes were instigated, the most visible were the three "Caribbean Knights" held in 1963, 1964 and 1965. Famous bands were engaged and huge marquees erected to cope with the 1,300 or so people who attended each one. The famous bands included The Leeward Islands Steel Band, Acer Bilk and The Temperance Seven

Below are tickets for the first two, a map of the area in 1963 and one of the huge marquees.





1965 THE CLUB'S DIAMOND JUBILEE

Here is a cutting from the Kentish Times of April 1965. There is nothing about any celebratory events but there would have been since the social side was very strong at that time.

Diamond Jubilee of the Crescent Tennis Club

CRESCENT LAWN TENNIS CLUB celebrates its diamond jubilee this year, and the summer season, which opens on May 1 at Sydney-road (behind the fire station), promises to be a significant one.

In association with Sidcup Rugby and Cricket Clubs, it is hoped to commence building this year a new club-house with modern changing accommodation and other excellent facilities, including a car park.

Although this is in every way a joint effort, the old "esprit de corps" will be maintained by keeping a separate tennis tea-room and bar adjacent to the main bar.

Subsequently, two more courts will be added to the existing eight grass and hard courts, and at least one will be flood-lit. Thus, all the year round tennis will be available.

IMPROVED COURTS

Last year, following professional advice, a great deal of time and money was spent on the fertilisation and improvement of the courts. Many compliments were received from visiting clubs, and this year, the courts promise to be even better.

The whole playing area was surrounded by new green plastic-covered wire, and a very smart impression results.

In the near future, therefore, members will enjoy facilities unsurpassed in the district, and it is hoped that many new members will be attracted.

Apart from enjoyable club play and fixtures with friends from local clubs, teams are entered in the Kent Cup. Good results have been obtained, and this year the mixed team reached the final of the Kent winter tournament.

SOCIAL SIDE

For those who enjoy the social side, an energetic committee organises dances, car rallies, cheese and wine parties, American tournaments, etc. Excellent teas are provided, and there is a licensed bar.

There are vacancies for new members, who should contact the hon. secretary, Mr. John Cook, at 63, Harland-avenue, Sidcup, or come to the club any week-end afternoon.

For those who are keen to improve their game, the club has engaged the services of a well-known professional coach.

Diamond Jubilee of the Crescent Tennis Club.

Crescent Lawn Tennis Club celebrates its diamond jubilee this year, and the summer season, which opens on May 1 at Sydney-road (behind the fire station), promises to be a significant one

In association with Sidcup Rugby and Cricket Clubs it is hoped to commence building this year a new club-house with modern changing accommodation and other excellent facilities including a car park.

Although in every way this is a joint effort the old 'esprit de corps' will be maintained by keeping a separate tennis tea room and bar adjacent to the main bar.

Subsequently, two more courts will be added to the existing eight grass and hard courts and at least one will be flood-lit. Thus all year round tennis will be available.

IMPROVED COURTS

Last year, following professional advice, a great deal of time and money was spent on fertilisation and improvement of the courts. Many compliments were received from visiting clubs, and this year the courts promise to be even better.

The whole playing area was surrounded by new green plastic covered wire, and a very smart impression results.

In the near future members will enjoy facilities unsurpassed in the district and it is hoped that many new members will be attracted.

Apart from enjoyable club play and fixtures with friends from local clubs, teams are entered in the Kent Cup. Good results have been obtained this year the mixed team reached the final of the Kent winter tournament.

SOCIAL SIDE

For those who enjoy the social side, and energetic committee organises dances, car rallies, cheese and wine parties, American tournaments, etc. Excellent teas are provided and there is a licenced bar.

There are vacancies for new members who should contact the hon secretary Mr John Cook, at 63, Harland – avenue, Sidcup, or come to the club any weekend afternoon.

For those who are keen to improve their game, the club has engaged the services of a well-known professional coach.

CRESCENT LAWN TENNIS CLUB

SOCIAL PROGRAMME 1965

Sat. May 8th	Vice-Presidents' Cocktail Party
Fri. May 14th	Sweater Hop
Sat. June 5th	Italian Evening
Fri. June 18th	Barbeque by Candlelight
Sun. July 18th	"Bangers and Mash" Supper
Sat. July 24th	Social Night
Fri. Aug 13th	Lucky 13 Night
Mon. Aug 30th	Folk Evening
Fri. Sept 17th	Diamond Jubilee Ball

For further details contact:

D. Coath,
8, Elm Road,
Sidcup,
Kent.

Tel. FOO 5861

Later in 1965 a very elaborate appeal document was published and widely circulated. By the end of the year the result of this, the negotiation of grants and loans from the Ministry of Education, Rugby Football Union, National Playing Fields Association, Lawn Tennis Association and other bodies, together with funds already accumulated enabled plans to be finalised for building to commence in 1966. Buildings demolished to make way included the Cricket clubhouse. The Rugby clubhouse was the Later in 1965 a very elaborate appeal document was published and widely circulated. By the end of the year the result of this, the negotiation of grants and loans from the Ministry of Education, Rugby Football Union, National Playing Fields Association, Lawn Tennis Association and other bodies, together with funds already accumulated enabled plans to be finalised for building to commence in 1966. Buildings demolished to make way included the Cricket clubhouse. The Rugby clubhouse was the old cowshed which still remains to the left of the north field.⁷



⁷ This is now the Nursey



Here is an extract from the appeal brochure

Architect's plan and perspective of the proposed new Clubhouse

The above perspective shows the building from the south-west. The paved path leads to the main entrance, with the men's changing accommodations on the right and the tennis room in the wing on the left.

The plan of the proposal clearly shows the functional layout of the Clubhouse. Each of the summer sports can be watched conveniently from the building, the rugby ladies preparing teas can watch the principal game being played. The two bars though quite separate actually adjoin and though the tennis wing is a separate entity it is easily accessible to and from the main bar.

The plans for the building have been drawn up by the well-known architects Seymour Harris and Partners and the building will be of brick construction with a tiled roof giving an area of about 6,000 square feet.

Initially the Tennis Club had its own club room and ran its own bar as envisaged in these plans but in a short time was forced to relinquish both rooms to create a Sports Club Lounge bar.

Cost over runs meant modifications to the plans including the loss of the protruding roof outside the tennis room.

THE OPENING SEPTEMBER 16TH 1966



From a cowshed to a £27,000 super-modern pavilion – this was the pipedream come true referred to by the Mayor of Bexley, Councillor Kenneth J. Smith, J.P., when he performed the official opening ceremony of the new clubhouse at Sidcup Sports Club on Saturday.

ERECTION OF SIDCUP SPORTS CLUB
CLUBHOUSE 1966



1965 - BEFORE ↑
AFTER ↓ 1966



1965 - BEFORE ↑
AFTER ↓ 1966





The Arthur Maxted mentioned was the late father of one of our subsequent vice-presidents. Not only did he do the work mentioned but he ran the hut bar in the new clubhouse.

The “Cowshed,”⁸ the old pavilion so described because that is what once really was (as well as a slaughter-house in World War I), was the subject of a few jokes and cracks by the Mayor, who went on in more serious vein to congratulate members on the hard work they had put in to achieve their goal.

The only reminders of the old club house transferred into the new building were a huge wheel, which once served the purpose of holding the lights up and a gallery of photographs taken of the rugger, cricket, football and tennis sections over the years.

⁸ Now the nursery.

Describing recreation as a necessary part of any civilised community, Councillor Smith spoke of the many times cricketers had laid turn around the club house while waiting to go out and play, and of the ever-ready refreshments provided by the ladies as an extra spur to competition.

“The club is of an attractive appearance with inviting facilities, and has every sign of providing you with a long and loyal service” he said.

Finally, wishing the club and clubhouse all the best for the future, Councillor Smith unlocked the doors amid loud cheers and applause.

HEALTHY POSITION

Mr K. D. Poulter, chairman of the club, after a briefly recounting the club’s history said that it was now in a strong and healthy position. They had always believed in planning ahead and that was how their beautiful club house had been brought into being.

Turning to the Mayor he said that the strength of the club with its overall membership exceeding 600, as before him and spoke of the members’ general willingness to get down to a job for the club’s sake.

Examples of this were seen in the changing rooms, where benches and fittings had been made by members; internal decorations also done by members under the guidance of Mr. Arthur Maxted; and a copper and aluminium plaque in the entrance lobby depicting a rugger, cricket and tennis player, made by rugger player Brian Skillman.

Continuing Mr. Poulter said that the ladies formed part of the strength. “Their organising ability is magnificent” he commented “We only have to be careful that they don’t want to organise us as well.”

EQUAL SUPPORT

In every way it was a happy place with all the sections pleased to be in one another’s company and giving each other equal support. There are four cricket teams and six rugger sides while the tennis club was bursting at the seams with people having to wait to get a game.

They had gained fame far and wide and at this point Mr. Poulter mentioned a congratulatory letter on the erection of the club hose from Mr Roy Schinther M.P. from Victoria Australia, who had visited them while based at Australia house some time ago.

In conclusion a vote of thanks was proposed to the Mayor by Mr R. D. Rowland Hill general secretary, who said that the Council and residents should be proud and pleased of their club, which did its best to look after the physical and mental, if not the spiritual and moral welfare of its members.

So many people had done so much work enabling them to build a splendid club house on a tight budget, he added

MEMBERS HELPED

Mrs Dorothy Coath was chairman of the ladies committee formed for the purpose of raising money for soft furnishings, which was done by holding sales, coffee mornings and dancing lessons.

Landscaping was carried out by club members, who moved 800 cubic yards of soil with the help of a bulldozer and dumper and laid 4,500 turves. Crazy paving was laid by Mr Skillman. The architects were Seymour Harris and Partners and the contractors William Blay Ltd.

Among those present at Saturday’s opening was Mr R. D. Creasey, T.D., J.P. (president of the club) and Mrs Creasey, Dame Patricia Hornsby-Smith, P.C (prospective Conservative candidate for Chislehurst) and Miss Bertha James (club patrons).

The "cowshed," the old pavilion so described because this is what it once really was (as well as a slaughter-house in World War I), was the subject of a few jokes cracked by the Mayor, who went on in more serious vein to congratulate members on the hard work they had put in to achieve their goal.

The only reminders of the old club house transferred into the new building were a huge wheel, which once served the purpose of holding the lights up, and a gallery of photographs taken of the rugby, cricket, football and tennis sections over the years.

Describing recreation as a necessary part of any civilised community, Councillor Smith spoke of the many times cricketers had laid turf around the club house while waiting to go out to play, and of the ever-ready refreshments provided by the ladies as an extra spur to competition.

"The club is of an attractive appearance with inviting facilities, and has every sign of providing you with a long and loyal service," he said.

Finally, wishing the club and clubhouse all the best for the future, Councillor Smith unlocked the doors amid loud cheers and applause.

HEALTHY POSITION

Mr. K. D. Poulter, chairman of the club, after briefly recounting the club's history said that it was now in a strong and healthy position. They had always believed in planning ahead and that was how their beautiful club house had been brought into being.

Turning to the Mayor he said that the strength of the club, with its overall membership exceeding 600, was before him, and spoke of the members' general willingness to get down to a job for the club's sake.

Examples of this were to be seen in the changing rooms, where benches and fittings had been made by members; internal decorations also done by members under the guidance of Mr. Arthur Maxted; and a copper and aluminium plaque in the entrance lobby depicting a rugby, cricket and tennis player, made by rugby player Brian Skillman.

Continuing, Mr. Poulter said that the ladies formed part of the strength. "Their organising ability is magnificent," he commented. "We only have to be careful that they don't organise us as well."

EQUAL SUPPORT

In every way it was a happy place with all sections pleased to be in one another's company and giving each other equal support. There were four cricket teams and six rugby sides while the tennis club was bursting at the seams with people having to wait to get a game.

They had gained fame far and wide and at this point Mr. Poulter mentioned a con-

gratulatory letter on the erection of the club house from Mr. Roy Scinther, M.P. from Victoria, Australia, who had visited them while based at Australia House some time ago.

In conclusion a vote of thanks was proposed to the Mayor by Mr. R. D. Rowland-Hill, general secretary, who said that the Council and residents should be proud and pleased of their club, which did its best to look after the physical and mental, if not the spiritual and moral, welfare of its members.

So many people had done so much work enabling them to build a splendid clubhouse on a tight budget, he added.

MANY FACILITIES

During the afternoon visitors watched cricket, rugby and tennis, or wandered round the clubhouse, which boasts excellent changing facilities, hot and cold showers and baths, as well as two bars and a spacious sea room.

Nearly the whole building is timbered in light wood, partially carpeted, with high-back stools at the bars.

A further sum of £10,000 is needed and to complete the scheme plans are in hand for a rugby stand, additional tennis courts and an improved car park costing approximately another £5,000.

A development committee was first set up in 1959 to decide how best to improve the whole of the sports ground and their report recommended the spending of about £35,000.

A preliminary investigation into the various sources of loans and grants was undertaken by the finance committee, under the chairmanship of Mr. Rowland-Hill, while Mr. R. D. Kerr was co-ordinating chairman of all committees of the project. Mr. G. Harris was chairman of the technical committee, Mr. Alec Higgins (chairman of the appeals committee), and Mr. P. E. Watts (chairman of the loans committee).

MEMBERS HELPED

Mrs. Dorothy Coath was chairman of the ladies committee formed for the purpose of raising money for soft furnishings, which was done by holding sales, coffee mornings and dancing lessons.

Landscaping was carried out by club members, who moved 800 cubic yards of soil with the help of a bulldozer and dumper and laid 4,500 turves. Crazy-paving was laid by Mr. Skillman. The architects were Seymour Hazra and Partners and the contractors William Bay, Ltd.

Among those present at Saturday's opening was Mr. R. D. Creasey, T.D., J.P. (president of the club) and Mrs. Creasey, Dame Patricia Hornsby-Smith, P.C. (prospective Conservative candidate for Chislehurst) and Miss Bertha James (club patrons).



Arthur Maxted Senior

1968 FINANCIAL SETBACKS

In 1968 an event occurred which drew heavily on SSC funds and thus cost Crescent more in contributions. When the land was purchased, the south field, on which Riffield Homes have now been built, was sold to Striling Offices for their sports ground. They had an attractive wooden clubhouse there and played football and cricket.

Part of the deal was that if they ever sold SSC would get first refusal at 'sports ground' price. In 1968, without consultation, they applied for planning permission to build houses. The club engaged lawyers to resist this and it was turned down by Sidcup Council. In 1974 they applied again and SSC proceeded with very expensive legal case to dispute their right to sell the land to other than SSC. In the end a settlement was made 'out of court' and the land reverted to SSC. For several years before the sale of the land in 2003 it was used for archery.

Without access to SSC papers, it is possible that some of this detail is inaccurate but the basic fact that many thousands of pounds were lost to us is a fact.

SQUASH CLUB

Shortly after the clubhouse was completed two squash courts were built and another added on 1974. Sidcup Squash Club was formed and subsequently became a constituent club of SSC. Unfortunately, they experienced financial problems in later years and in the reorganisation of 2000, they were disbanded and the courts demolished and not replaced.

1969

After huge fund raising efforts by Roger Wickham, Social Secretary, and his large committee and with the help of SSC, two hard courts (En-Tout-Cas) were built on an allotment, worked by Hugh Morle, where the stony carpark now is.

This gave six grass courts and four hard courts.

This cutting from Kentish Times 1st August 1969

NEW HARD COURTS OPENED AT SPORTS CLUB

SIDCUP SPORTS CLUB, now probably the premier amateur sports centre in Kent, celebrated their latest development – the provision of two new hard courts for Crescent Lawn Tennis Club, one of their constituent sections – with a sherry party at the club pavilion, Sydney Road, Sidcup on Sunday

It was a measure of the club's forward-looking approach that many of the members were already talking about their next project, namely the addition of squash to their present activities of rugby, tennis and cricket with the construction of two new squash courts, which should be completed by the end of the year.

Officials of the club told a Kentish Times reporter that the central committee had some years ago drawn up a list of projects for each of the constituent clubs, and the decision on which should have priority was only taken after careful consideration of needs, finance available, expected income from any new undertaking and time involved.

The two new tennis courts, costing about £2,300, had been built with funds provided by the club as a whole and with loans from the Lawn Tennis Association and the Kent Playing Fields Association. The necessary number of guarantors has come forward in the remarkably short time of three days.

IMPROVED STANDARD

The Crescent Lawn Tennis Club, which has been in existence for 64 years, now has six grass courts and four hard courts, enabling them to support a membership of 135 seniors and 50 juniors

Mr C. W. J. Leng, the President of the tennis club and also field marshal of the Royal Blackheath Golf Club, commented on the improving standard of tennis now being played there, referring to the fact that during the last

Previously the club had not been able to accept all the summer members who had wished to continue during the winter, said Mr Leng, but the acquisition of the new courts would now overcome this difficulty and enable them to enter an extra men's team for the Winter Kent Cup.

In reply to Mr Leng, Mr R. D. Creasey, T.D., J.P., the president of the Sidcup Sports Club reminded members that it was now 21 years since the three constituent clubs first amalgamated.

Tremendous improvements had taken place there he said, notably the building of a groundsman's house in 1958 and of a pavilion in 1966, and it was only financial considerations which were holding up further projects that had been thoroughly investigated by the central committee.

MANY GUESTS

Among the guests present at the party were Messers. R. Rowland-Hill, secretary of the sports club; C. Ashdown, treasurer of the sports club and president of the projected squash club; A. H. Ford, chairman of the tennis club; G. K. Horner, treasure of the tennis club; A. S. Maxted, match secretary of the tennis club; R. Wickham, social secretary; P. Farrell, Cricket captain; and H. P. M. Organ treasurer of the rugby club.

three years both the men's and ladies' teams had been successful in the Kent League and had risen to the second division.

Messers, K. Poulter, chairman of the sports club and J. Cook, secretary of the tennis club were on holiday and unable to be present.

EXTRA MEN'S TEAM

The mixed team has been promoted to Division 1 of the League, he said, and, by reaching the final of the Winter Kent Cup competition, the mens' team has now been promoted to the first division of that competition.

This gave six grass courts and four hard courts

SIDCUP & KENTISH TIMES 1st AUGUST 1969

NEW HARD COURTS OPENED AT SPORTS CLUB

SIDCUP SPORTS CLUB, now probably the premier amateur sports centre in Kent, celebrated their latest development—the provision of two new hard courts for the Crescent Lawn Tennis Club, one of their constituent sections—with a sherry party at the club pavilion, Sydney Road, Sidcup, on Sunday.

It is a measure of the club's forward-looking approach that many of the members were already talking about their next project, namely the addition of squash to their present activities of rugby, tennis and cricket with the construction of two new squash courts, which should be completed by the end of the year.

Officers of the club told a *Kentish Times* reporter that the central committee had some years ago drawn up a list of projects for each of the constituent clubs, and the decision on which should have priority was only taken after careful consideration of needs, finance available, expected income from any new undertaking and time involved.

The two new tennis courts, costing about £2,300, had been built with funds provided by the club as a whole and with loans from the Lawn Tennis Association and the Kent Playing Fields Association. The necessary number of guarantors had come forward in the

remarkably short time of three days.

IMPROVED STANDARD

The Crescent Lawn Tennis Club, which has been in existence for 64 years, now has six grass courts and four hard courts, enabling them to support a membership of 125 seniors and 50 juniors.

Mr. C. W. J. Leng, the president of the tennis club and also field marshal of the Royal Blackheath Golf Club, commented on the improving standard of tennis now being played there, referring to the fact that during the last three years both the men's and ladies' teams had been successful in the Kent League and had risen to the second division.

EXTRA MEN'S TEAM

The mixed team had been promoted to Division 1 of the League, he said, and, by reaching the final of the Winter Kent Cup competition, the mens' team had now been promoted to the first division of that competition.

Previously the club had not been able to accept all the

summer members who had wished to continue during the winter, said Mr. Leng, but the acquisition of the new courts would now overcome this difficulty and enable them to enter an extra men's team for the Winter Kent Cup.

In reply to Mr. Leng, Mr. R. D. Cressley, T.D., J.P., the president of the Sidcup Sports Club, reminded members that it was now 21 years since the three constituent clubs first amalgamated.

Tremendous improvements had taken place since then, he said, notably the building of a groundsman's house in 1958 and of the pavilion in 1966, and it was only financial considerations which were holding up further projects that had been thoroughly investigated by the central committee.

MANY GUESTS

Among the guests present at the party were Messrs. R. Rowland-Hill, secretary of the sports club; C. Ashdown, treasurer of the sports club and president of the projected squash club; A. H. Ford, chairman of the tennis club; G. K. Horner, treasurer of the tennis club; A. S. Maxted, match secretary of the tennis club; R. Wickham, social secretary; P. Farrell, cricket captain; and H. P. M. Organ, treasurer of the rugby club.

Messrs. K. Poulter, chairman of the sports club, and J. Cook, secretary of the tennis club, were on holiday and unable to be present.

Christening the court



Baptising one of the two new hard courts at the Crescent Lawn Tennis Club, Sidcup, with the contents of his glass of sherry is the club's president, Mr. C. W. J. Leng. Together with him in this picture are other officers of the tennis club and Sidcup Sports Club who also came to Crescent Farm on Sunday for a celebratory cocktail party. They are (left to right) Messrs. R. D. Cressey, president of the sports club, R. D. Rowland-Hill, secretary of the sports club, C. M. Ashdown, treasurer of the sports club; Roger Wickham, social secretary; G. K. Horner, treasurer of the tennis club; and A. H. Ford, chairman of the tennis club. — (K.T. Photo No. K/3367G.)

R. D. Creasey, President SSC
R. D. Rowland-Hill, Secretary SSC
C. M. Ashdown, Treasurer SSC
Cecil Leng, President Crescent Lawn Tennis Club
Rocher Wickham, Social Secretary Crescent Lawn Tennis Club
Graeme Horner, Treasurer Crescent Lawn Tennis Club
Henry Ford, Chairman Crescent Lawn Tennis Club

Baptising one of the two new hard courts at Crescent Lawn Tennis Club, with the contents of his glass of sherry is the club's president Mr. C. W. J. Leng. Together with him in this picture are other officers of the tennis club and Sidcup Sports Club who also came to Crescent Farm on Sunday for a celebratory cocktail party.

(K.T. Photo No. K/3507G)

An opportune moment to mention Henry Ford (Chairman from 1952 to 1972). He was a great servant to the club and one of the leading members of the SSC Development Committee at the time of the land purchase and the building of the 1966 clubhouse. Even after his Chairmanship he continued to working with the Ground Committee. As mentioned previously, he accumulated much of the material in this booklet. He died in 1977.

October 1964

DEATH OF SIDCUP SPORTS MAN

MR JOHN LUNN

A well known local sportsman, Mr. John Lunn, died at his home St. Olave's 17 Knoll road Sidcup, early on Sunday aged 66.

Born in London, he was in his youth a keen soccer player; having received his university football blue, and also played for the Casuals. In coming to Sidcup in 1931 he became an active member of Crescent Lawn Tennis Club, and during his long residence in this district has been a loyal supporter of Sidcup Football Club and Sidcup Golf Club. Mr Lunn graduated in civil engineering from University College London but took up a commercial career becoming general works manager and production manager of British Vinegars, Lt..

When a boy, he saved a girl from drowning and was awarded a medal.

Towards the end of World War I he served with the HAC; and in World War II served in the Home Guard, and became platoon commander at Fooks Cray.

He married in 1926 Miss Kathleen Baynes, by whom he is survived.

The funeral is arranged for today (Friday) at 11am at Eltham Crematorium

September 1971

MEMORIAL TO A TENNIS CLUB STALWART

Three large teak seats were presented to Crescent Lawn Tennis Club, Sidcup, at a sherry party last Sunday. They were given by Mrs. K. Lunn of 3, Rossmore, Chislehurst Road, Sidcup, in memory of her husband, the late Mr. John Lunn.

Mrs. Lunn was welcomed by the chairman, Mr. A. H. Ford, said her husband had enjoyed more than 30 years as a club member.

Mr Ford said Mr Lunn has gained a soccer blue at his university and also played for the Corinthian Casuals. During his long residence in Sidcup besides playing tennis for Crescent and winning the singles title, Mr Lunn had been a keen supporter of Sidcup Football Club and Sidcup Golf Club.

Mr Lunn said the day was the anniversary of her husband's birth, and it reminded her of the happy years both he and she has spent as members of the club.

Members drank as toast to the memory of Jack Lunn, and the chairman thanked Mrs Lunn for her gift which would be a treasured possession of the club.

Mrs Lunn was presented with a bouquet by the retiring ladies' captain, Mrs Betty Cook, after which the chairman proposed the health of Mrs. Lunn, and thanked Mrs. Sylvia Jassoy and her committee for organising the refreshments.

DEATH OF SIDCUP SPORTSMAN
MR. JOHN LUNN

A WELL-KNOWN local sportsman, Mr. John Lunn, died at his home, St. Olave's, 17, Knoll-road, Sidcup, early on Sunday, aged 66.

Born in London, he was in his youth a keen soccer player; he received his university football bar, and also played for the Casuals. In coming to Sidcup in 1931 he became an active member of the Crescent Lawn Tennis Club, and during his long residence in this district has been a loyal supporter of Sidcup Football Club and Sidcup Golf Club. Mr. Lunn graduated in civil engineering at University College, London, but took up a commercial career, becoming general works manager and production manager of British Vinegars, Ltd.

When a boy, he saved a girl from drowning and was awarded a medal.

Towards the end of World War I he served with the H.A.C.; and in World War II served in the Home Guard, and became platoon commander at Foots Cray.

He married in 1926 Miss Kathleen Baynes, by whom he is survived.

The funeral is arranged for today (Friday) at 11 a.m. at Eltham Crematorium.



Memorial to tennis club stalwart

THREE LARGE oak seats were presented to Crescent Lawn Tennis Club, Sidcup, at a sherry party last Sunday. They were given by Mrs K. Lunn, of 3, Rossmore, Chislehurst Road, Sidcup, in memory of her husband, the late Mr John Lunn.

Mrs Lunn, who was welcomed by the chairman, Mr A. H. Ford, said her husband had enjoyed more than 30 years as a club member.

Mr Ford said Mr Lunn had gained a Soccer blue at this university and also played for the Corinthian-Casuals, during long residence in Sidcup, besides playing tennis for Crescent and winning the singles title. Mr Lunn had been a keen supporter of Sidcup Football Club and Sidcup Golf Club.

Mrs Lunn said the day was the anniversary of her husband's birth, and it reminded her of the happy years both he and she had spent as members of the club.

Members then drank a toast to the memory of Jack Lunn, and the chairman thanked Mrs Lunn for her gift, which would be a treasured possession of the club.

Mrs Lunn was presented with a bouquet by the retiring ladies' captain, Mrs Betty Cook, after which the chairman proposed the health of Mrs Lunn, and thanked Mrs Sylvia Jassoy and her committee for organising the refreshments.

John Lunn joined the club in 1931. In the 1932 photograph, his wife Katie Lunn⁹, is seen winning the ladies' singles. He, in turn won the gentlemen's singles in 1937. A touching little piece of history.

⁹ See page 4.

1972

Honours Board. Cutting from the Kentish Times 15th September 1972

The board was filled by 1960. New boards will be in place early in centenary year.¹⁰

HONOURS BOARD FOR TENNIS CLUB.

For the first time in their 67-year history Crescent Lawn Tennis Club have an honours board proudly displayed in their clubhouse in Sydney Road, Sidcup.

It was unveiled by their president Mr. A Gundry, on Sunday, watched by many members whose names appear on the board.

Although founded in 1905 as a tennis and croquet club, it was not until 1910 that a challenge cup was presented and it is from that date that the singles champion is recorded.

Among the names is that of P. F. de Souza who became a Wimbledon player.

HISTORY

A little of the history of the club was explained by the chairman Mr. A. H. Ford, who said that although croquet is no longer played, before World War I the section was one of the strongest in Kent.

Introducing Mr. Gundry, he said he could think of no person better fitted to perform the unveiling ceremony.

He had joined the club in 1928 and held many offices with distinction, he said. The name Gundry appeared many times on the honours board with four different members of the family becoming champions.

HONOURS BOARD FOR TENNIS CLUB

FOR THE first time in their 67-year history, Crescent Lawn Tennis Club have an honours board proudly displayed in their clubhouse in Sydney Road, Sidcup.

It was unveiled by their president, Mr A. Gundry, on Sunday, watched by many members whose names appear on the board.

Although founded in 1905 as a tennis and croquet club, it was not until 1910 that a challenge cup was presented and it is from that date that the singles champions are recorded.

Among the names is that of P. F. de Souza who became a Wimbledon player.

HISTORY

A little of the history of the club was explained by the chairman, Mr A. H. Ford, who said that, although croquet is no longer played, before World War I the section was one of the strongest in Kent.

Introducing Mr Gundry, he said he could think of no person better fitted to perform the unveiling ceremony.

He had joined the club in 1928 and held many offices with distinction, he said. The name Gundry appeared many times on the honours board with four different members of the family becoming champions.

Mr Gundry thanked members who had generously subscribed to the cost of the board and Mr R. D. Rowland-Hill, a vice-president of the club and a former secretary of Sidcup Sport Club, who had first put forward the idea and donated the first subscription.

He described the club as one of the oldest in Kent, if not in the country, and explained that the board showed the names of the winners of the men's challenge cup, which was presented by Mr Arthur Johnson in 1910, and of the women's challenge cup, presented by Mr F. T. Jackson in 1923.

Several former champions were able to attend on Sunday and others had written, wishing to be remembered.

144 C.W.T. 15 11V 4 41-1465
FRIDAY 5 Far Em 4g.
the cep 2

¹⁰ These are now just about full

CRESCENT LAWN TENNIS CLUB

FOUNDED 1905
SINGLES CHAMPIONS

GENTLEMEN

LADIES

TROPHY PRESENTED BY A. JOHNSON ESQ.

TROPHY PRESENTED BY F. T. JACKSON ESQ.

1910	T. BEEVERS	1955	A. R. WILLS
1911	G. L. RADCLIFFE	1956	A. R. WILLS
1912	A. T. GUNDRY	1957	C. H. DAVIDSON
1913	A. T. GUNDRY	1958	S. J. MAYNARD
1914	W. GUNDRY	1959	J. A. WILLIAMS
1915	- 1918 NO COMPETITION	1960	J. COOK
1919	A. V. DAVIES	1961	J. COOK
1920	A. F. JENKINS	1962	L. HENNY
1921	S. E. GREEN	1963	J. COOK
1922	A. V. DAVIES	1964	J. COOK
1923	A. V. DAVIES	1965	J. COOK
1924	A. V. DAVIES	1966	J. COOK
1925	F. S. NEAME	1967	G. PULLIN
1926	J. GUNDRY	1968	J. A. W. HANCOCK
1927	P. F. de SOUZA	1969	J. A. W. HANCOCK
1928	P. F. de SOUZA	1970	J. COOK
1929	P. F. de SOUZA	1971	P. LEE
1930	P. F. de SOUZA	1972	J. COOK
1931	P. F. de SOUZA	1973	C. D. BURNS
1932	P. F. de SOUZA	1974	C. D. BURNS
1933	H. M. ARTHUR	1975	J. COOK
1934	S. B. STOCK	1976	J. COOK
1935	A. GUNDRY	1977	A. S. MAXTED
1936	H. MORLE	1978	J. S. CRUST
1937	J. LUNN	1979	J. S. CRUST
1938	A. GUNDRY	1980	J. S. CRUST
1939	H. P. MORLE	1981	J. S. CRUST
1940	- 46 NO COMPETITION	1982	J. S. CRUST
1947	A. GUNDRY	1983	J. S. CRUST
1948	E. A. A. W. DUDNEY	1984	J. S. CRUST
1949	R. W. BRICKELL	1985	T. J. BAILEY
1950	R. W. BRICKELL	1986	P. JONES
1951	R. W. BRICKELL	1987	T. J. BAILEY
1952	R. W. BRICKELL	1988	M. BOWLES
1953	R. W. BRICKELL	1989	P. MAY
1954	R. W. BRICKELL	1990	T. J. BAILEY

1923	MRS. B. M. WOODCOCK	1965	MISS. D. DONALDSON
1924	MRS. P. COURTENAY	1966	MRS. B. COOK
1925	MISS. F. M. SHEPHERD	1967	MISS. V. DENNIS
1926	MRS. P. COURTENAY	1968	MRS. B. COOK
1927	MRS. P. COURTENAY	1969	MRS. A. BRIGGS
1928	MISS. A. M. LUNN	1970	MRS. A. BRIGGS
1929	MISS. H. BAHM	1971	MISS. V. DENNIS
1930	MISS. H. BAHM	1972	MISS. V. M. STANTON
1931	MISS. H. BAHM	1973	MISS. M. TILBURY
1932	MISS. A. M. LUNN	1974	MISS. M. TILBURY
1933	MISS. M. T. KAY	1975	MISS. V. M. STANTON
1934	MISS. M. T. KAY	1976	MISS. V. M. STANTON
1935	MISS. H. BAHM	1977	MISS. V. M. STANTON
1936	MISS. E. N. WRIGHT	1978	MISS. V. M. STANTON
1937	MISS. E. N. WRIGHT	1979	MRS. V. M. JOHNSON
1938	MISS. E. N. WRIGHT	1980	MRS. V. M. JOHNSON
1939	MRS. H. ATKINSON	1981	MRS. V. M. JOHNSON
1940	- 46 NO COMPETITION	1982	MRS. V. M. JOHNSON
1947	MISS. E. UNWIN	1983	MISS. J. FRANCIS
1948	MISS. N. R. LENG	1984	MISS. C. BAILEY
1949	MISS. N. R. LENG	1985	MISS. J. A. STERNE
1950	MISS. J. JACKSON	1986	MISS. C. MAXTED
1951	MISS. M. W. EASTWOOD	1987	MRS. S. WHITING
1952	MISS. M. ELLINGWORTH	1988	MRS. S. WHITING
1953	MISS. M. W. EASTWOOD	1989	MRS. J. COPP
1954	MISS. M. W. EASTWOOD	1990	MRS. J. COPP
1955	MISS. M. W. EASTWOOD		
1956	MISS. M. W. EASTWOOD		
1957	MRS. M. P. NEWDICK		
1958	MRS. M. D. MASTERS		
1959	MISS. M. W. EASTWOOD		
1960	MRS. M. P. NEWDICK		
1961	MRS. M. P. NEWDICK		
1962	MISS. M. W. EASTWOOD		
1963	MISS. M. W. EASTWOOD		
1964	MRS. J. NORTH		

For a full list of winners please look at the club's website.

JOHN HANCOCK

Club Coach 1967 to 1987

On his retirement he was elected a Vice-President.
He still came to the club and attended Midweek events.

Cuttings from the Kentish Times 23rd August 1979



PROFESSIONAL John Hancock, pictured above coaching the youngsters at Crescent Lawn Tennis Club Sidcup. He is always on the look-out for the brilliant talent but also keeps a special eye on those who will never make the tournaments

Somewhere down the road, beyond Sidcup Fire Station, a small man with an outdoor face who looks remarkably like Dan Maskell gyrates through a series of hip wiggles and shoulder turns.

Beneath the blue peaked cap, the Crescent Lawn Tennis Club's coach is putting budding Bjorn Borgs through their paces.

"The first movement is to swing with a flowing action". An immaculate backhand competes with gale force winds. The front row of his class of 16, aged between nine and 17 are almost blown over. "Stand firm! Stand firm! Need a guy rope?"

The instructions from John Hancock, professional at the club for 15 years, are taken up by his pupils, some fat, some thin, the majority clothed in whites their rackets showing little sign of amateurism or broken strings.

The club is running coaching lessons during the summer holidays on their four en-tout-cas¹¹ courts under Hancock's eagle eye. It is every coach's dream to uncover a talent that will make the highest flight, a task in itself in Britain at the moment.

John Hancock, 62, who made the Middlesex County First Division, has had pupils who have made junior Wimbledon. But he derives great pleasure from those who will never be anything special.

I enjoy meeting people, and it's wonderful if you can see them improve. If a person has natural ball sense he will do well. I like working with children, although one has to be more patient with them.

"I've just had three professional footballers join the club -

they picked up the game straight away because they have natural skills.

In the groups Hancock is taking – demand has been so great that next year more classes will have to be held – he has one or two promising youngsters, who will be encouraged to enter local tournaments, such as are held in Maidstone, Bromley and Bexley.

Some of the children are only there because their parent wish it. But they enjoy the strict routines. Today it is backhand. One pupil throws the ball over the net, the other side another attempts to put John Hancock's words into practice.

"I learned mainly from observation," said the kindly coach. Before World War II tennis was a rich man's game, but now there is opportunity for everyone. We have good coaching schemes which encourage youngsters who are just as competitive as Americans.

"At first I teach forehand, backhand and serve, then volley and overhead smash. Later I come on to net play, and then with the best, who go on to a special squad, get on to the drop shot – a killer at my age – and tactical play.

"If I had my time again, I wouldn't want to do anything else." And with that, the seasoned pro departs to do battle with the wind and sliced backhands.

¹¹ The name comes from the French phrase which translates roughly as "in all conditions." The En-Tout-Cas name is known the world over and is often used as a generic term for **any synthetic tennis court**.

Kindly coach has an eye for the not- so-brilliant hopefuls

By Ivo Tennant

SOMEWHERE down the road, beyond Sidcup Fire Station, a small man with an outdoor face who looks remarkably like Dan Maskell, evrates through a series of hip wiggles and shoulder turns.

Beneath a blue-peaked cap, the Crescent Lawn Tennis Club's coach is putting budding Bjorn Borgs through steady paces.

"The first movement is to swing with a flowing action." An immaculate backhand competes with gale-force winds. The front row of his class of 16, aged between nine and 17, are almost blown over. "Stand firm! Stand firm! Need a guy rope?"

The instructions of John Hancock, professional at the club for 15 years, are taken up by his pupils, some fat, some thin, the majority clothed in whites, their rackets showing little sign of amateurism or broken strings.

The club is running coaching lessons during the summer holidays on their four outdoor courts, under Hancock's eagle eye. It is every coach's dream to uncover a talent that will make the highest flight a look in itself in Britain at the moment.

John Hancock, 62, who made Middlesex County First Division, has had pupils who have made junior Wimbledon. But he derives great pleasure from those who will never be anything special.

"I enjoy meeting people, and it's wonderful if you can see them improve. If a person has a natural ball sense, he will do well. I

like working with children, although one has to be more patient with them.

"I've just had three professional footballers join the club—they picked up the game straight away because they have natural skills."

In the groups Hancock is taking — demand has been so great that next year more classes will have to be held—he has one or two promising youngsters, who will be encouraged to enter local tournaments, such as are held in Maidstone, Bromley and Bexley.

Some of the children are only there because their parents wish it. But they enjoy the strict routines. Today it is backhand. One pupil throws a ball over the net, the other side another attempts to put John Hancock's words into practice.

"I learned mainly from observation," said the kindly coach. "Before World War II tennis was a rich man's game, but now there is opportunity for everyone. We have good coaching schemes which encourage youngsters, who are just as competitive as Americans."

"At first I teach forehand, backhand and serve, then volley and overhead smash. Later I come on to net play, and then with the best, who go on to a special squad, get on to the drop shot—a killer at my age—and tactical play."

"If I had my time again, I wouldn't want to do anything else." And with that the seasoned pro departs to do battle with the wind and allied backhands.

Another fund-raising effort!

Cutting from the Kentish Times 6th September 1979

 <p>Sports Scene by Peter Bryen</p> <p>Anything over an hour's tennis normally leaves me pretty shattered, so I'd like to pay tribute to two Crescent Lawn Tennis Club members from Sidcup.</p> <p>Trevor Cook and Jonathan Crust played a total of 28 sets during a 12-hour marathon last Saturday.</p> <p>The club recently started a court improvement fund to finance the renovation of its four shale courts with an all-weather type surface and the addition of court floodlighting.</p> <p>A sponsored tennis marathon was suggested as one way of raising money, so Trevor and Jonathan, this year's singles finalists, volunteered to play continuous tennis for 12 hours.</p> <p>They played seven sets of singles against each other and also paired up to take on challengers throughout the day. Trevor and Jonathan beat the all-comers by 20 sets to one!</p>	<h2>Sports Scene</h2> <p>By Peter Bryen</p> <p>Anything over an hour's tennis normally leaves me pretty shattered, so I'd like to pay tribute to two Crescent Lawn Tennis Club members from Sidcup.</p> <p>Trevor Cook and Johnathan Crust played a total of 28 sets during a 12 hour marathon last Saturday.</p> <p>The club recently started a court improvement fund to finance the renovation of its four shale courts with an all-weather type surface and the addition of court floodlighting.</p> <p>A sponsored tennis marathon was suggested as one way for raising money, so Trevor and Johnathan, this year's singles finalists volunteered to play continuous tennis for 12 hours.</p> <p>The played seven sets of singles against each other and also paired up to take on challengers throughout the day. Trevor and Johnathan beat all comers by 20 sets to one.!</p>
----------------------------------------------------------------------------------------------------------------------------------------------------------------------------------------------------------------------------------------------------------------------------------------------------------------------------------------------------------------------------------------------------------------------------------------------------------------------------------------------------------------------------------------------------------------------------------------------------------------------------------------------------------------------------------------------------------------------------------------------------------------------------------------------------------------------------------------------------------------------------------------------------------------------------------------------------------------------------	--------------------------------------------------------------------------------------------------------------------------------------------------------------------------------------------------------------------------------------------------------------------------------------------------------------------------------------------------------------------------------------------------------------------------------------------------------------------------------------------------------------------------------------------------------------------------------------------------------------------------------------------------------------------------------------------------------------------------------------------------------------------------------------------------------------------------------------------------------------------------------------

1970s

THE COURT IMPROVEMENT FUND

From the mid 1970s the C.I.F. was instigated to replace the clay courts with all weather courts. The clay courts required too much attention and were deteriorating.

This initiative was driven by Roger Wickham (Chairman 1974 to 1982) with great enthusiasm. Many fund-raising events were arranged, including the one on the previous page.

In 1981, sixteen members or couples loaned the club £4,000 in varying amounts to be repaid over four years partly by reduced subscriptions. This sum, together with money already in the fund and the usual grants and loans, enabled two shale courts to be replaced with porous concrete courts in the August of this year.

A GOOD INITIATIVE REJECTED.

In mid 1984, Alec McTavish (Secretary 1980 to 1982, Chairman 1998 to 1999) who was then the Tennis Club representative on the SSC Development Committee, put forward a proposal that the frontage onto Sydney Rd should be sold for building and that the proceeds be used to build a mini – David Lloyd centre on the south field and for other improvements. This proposal was thoroughly costed and researched, including meeting with David Lloyd who kindly gave advice on planning permission and how to obtain grants and loans.

Unfortunately, the proposal was rejected by SSC on the principle that the Sports Club land should not be sold. Ironic in the light of subsequent developments!!¹² It later transpired that restrictive covenants might have made this option difficult.

¹² The building of the houses that are now Stirling Close.

1985

The departure of a club stalwart.



Here is Arthur Maxted (Chairman) making a presentation to Arthur Gundry (President) on the occasion of his leaving Sidcup and resigning his office. It was a dinner at 'Sophies Choice' attended by a large number of members.

Arthur Gundry joined the club in 1928, and held many offices

He was a fine player as related earlier. He won the singles in 1935, 1938 and 1947. Also on the honours board are the names of his father and two other Gundrys.

For many years he undertook the onerous task of measuring up for the spring marking out of the grass courts.

He became President in 1972, and a very conscientious one he was, attending nearly every finals day to present the trophies.

Next to him in the picture is his wife Molly who was a match player and who was famous for her cakes in the days when the ladies did the teas.

They moved to Goring-on-Thames where he continued playing tennis into his 80s.

1988

GLENHURST'S MISFORTUNE CRESCENT'S GAIN.

Glenhurst LTC played on four shale courts with a ground and clubhouse in Hurst Road which they share with Cambridge Harriers. With membership down to the mid thirty mark, it was decided in 1988 that the club was no longer viable and should be disbanded. The majority of the members joined Crescent. One of these was Stanley Stephenson who was later to become Chairman at a difficult time for the club (2000 – 2002). Another was Gill Rafferty who introduced some good coaching schemes and is now match secretary.

The remaining Glenhurst funds, a generous amount, were donated to Crescent.

The Glenhurst teams had been playing in higher divisions of the leagues than Crescent and permission was given for their positions to be retained.

MIDWEEK SECTION FORMED.

Glenhurst had a small active group of Midweek players and eight of these, all males, formed the Midweek section at Crescent. Jim Russell, a qualified LTA coach started coaching a group of ladies and as they improved, they were encouraged to join the Midweek section. From these small beginnings arose a very strong Midweek section which has been the backbone of the club for many years.

1993

Following the provision of new hard courts in 1981, the court improvement fund lapsed owing to financial difficulties. However, things improved in the early 1990s and mainly through the initiatives of Malcom Fox, the Chairman, it was possible to replace two further grass courts with all-weather surfaces.

In 2001, the remaining grass courts were allowed to fall into disuse.

MALCOLM FOX.

Malcolm Fox was chairman and latterly Secretary between 1987 and 1997. He introduced the Volkswagen Ratings Tournaments and several other initiatives to the club, including a junior link to Bönien in 1994/95. (See below). He also became a councillor of the North Kent LTA and was the Treasurer in 2005.

VOLKSWAGEN RATINGS TOURNAMENT

This scheme, run in partnership with the LTA sought to give a handicap rating to all participants whether a club player or not. The higher handicaps played on the Monday and the winners had their handicaps reduced and played with the next category on Tuesday and so on throughout the week. The lowest handicappers played the finals on Saturday.

Crescent hosted these tournaments from 1989 to 1993 and there were some great finals involving county players.

Local banks, shops and businesses contributed generously to provide the prizes in return for advertising in the programme. Some profit accrued to the club.

Volkswagen ultimately withdrew its support and these tournaments were discontinued.



On Tuesday evening in the club house of the Rot-White Bönen between Bönens' deputy mayor Gerd Schmidt and Malcolm Fox (from right). Malcolm Fox is the head of a

delegation of a group of 13 young people between the ages of 11 and 17 and three adults from Sidcup in the Kent county. The young people from the British Isles stayed on TV {tennis club} for a week. The tennis club has maintained this connection for four years, and next year the Bönen will be start for a return visit to Sidcup. Presented in memory of the Bönen days Gerd Schmidt, on behalf of the community, a series of images by the local artist Bruno Moser. The reception was also attended by the chairman of the local council committee for youth, Social and sport, Thomas Köster, part (see also local sport).

1997

Club Coach gets an award

Sally Parsonage with the Crescent Performance squad. Sally was awarded USPTR 'Pro of the Year 1997'



Sally Parsonage with the Crescent performance squad. Sally was awarded the USPTR "UK Pro of the Year 1997" award.

CRESCENT WINS MILLENNIUM FESTIVAL AWARD

Cutting from News Shopper 20th June 2001

Crescent will sever an ace

CRESCENT Lawn tennis club in Sidcup has received a Millennium Festival award of £1,515 to enable it to offer free coaching to juniors and adults

The four-week courses are aimed at beginners of those returning to tennis and the only stipulation is that no club members can take up the offer.

Junior courses will run on Sunday morning (10-11am for eight year-olds and under, 11am – noon for 10 and under) or Monday afternoons (4:30 – 5:30 f or 12 years and under). All Sunday courses will start on June 24 and run until July 15. All Monday courses will start on June 25 and run until July 16.

The courses for adults will run on Saturdays from July 7 to July 28 (noon – 1pm).

The sessions will be supervised by two LTA qualified professional coaches, who will cover all the main aspects of the game.

There will be an opportunity to continue the courses at improver-level upon completion of the four-week course and a discounted membership offer.

All courses will be held at Crescent LTC, in Sydney Road, which is part of Sidcup Sports Club situated behind the fire station.

Course organiser Alan Randall, said, "This is a wonderful opportunity for newcomers to the sport and those returning to the game. I hope that both young and old will take this chance to play."

The Millennium Festival Awards for All is a joint programme set up to help local groups. It involves the Heritage Lottery Fund and Arts Council of England, Sport England, the National Lottery Charities Board and the Millennium Commission.

The main aim of the programme is to fund projects which involve people in their local community, bringing them together to enjoy arts, sport, heritage, charitable and other community activities t mark or celebrate the Millennium.

Gillian Quiney on 01322 273264 or Alan Randall on 020 8302 8003 to book a place, but hurry as coursed are limited to 12 players per course.



AMALGAMATION WITH NEW ELTHAM T.C.

Thanks to the satisfactory conclusion of discussions ably conducted by Alan Randall, Membership Secretary, with representatives of New Eltham Tennis Club and amalgamation of the two clubs was arranged in November 2001 when New Eltham left their ground in Footscray Rd in circumstances later outlined.

New Eltham Tennis club started life as the tennis section of the Royal Arsenal Co-operative Society's Employees' Sports Association, known locally as the R.A.C.S, back, it is believed in 1919. At that time the Society purchased "Shornells" a mansion at the top of Bostall Hill. This was the centre of a large and flourishing Employees Sports Association. There were no tennis courts on the site but the Co-op's employees played tennis on hired courts in a park in Abbey Wood. In 1920 the Association acquired a ground at Church Manorway, Plumstead, adjacent to the ground owned by RASRA, where they had four grass courts, played matches against other clubs and held annual tournaments with trophies for the winners, some of which are still in existence today. It was in 1936 that the North Kent League was formed and the R.A.C.S. was one of the founder members.

At the outbreak of war in 1939 the ground in Plumstead was requisitioned by the Royal Air force, possibly as a barrage balloon site for the defence of the nearby Royal Arsenal.

In 1947 the C.W.S. the parent company of the R.A.C.S. purchased a ground in Footscray Road at the junction with Green Lane and this became known as the Co-Op sports ground. The R.A.C.S. continued to run the sports ground and all went smoothly. Over the years the membership was opened up to associate members and all that was required to become a member, was a Co-Op bank account with as little as 6d¹³ being acceptable. In 1988 the parent company, the CWS took over the running of the sports club and all sections of the sports club had to become self-sufficient. The tennis club proceeded to rent the courts from the CWS, under a tenancy agreement, and the tennis club changed its' name to New Eltham Tennis Club.

Over the next ten years the club made many improvements to the site, relaying courts and installing floodlights when in January 1999 they received notice to leave by May 1999 as the CWS wished to sell the ground. The next 14 months were spent at the University Of Greenwich's courts in Avery Hill road whilst the club tried to raise funds through the Lottery and the LT to set up a new club on the grounds of the Footscray Rugby Club in Footscray road. During this time, Welling United football club were renting the Co-Op Sports ground as a training facility and they were quite happy for the tennis club to return and rent the tennis courts from them. The club returned to the ground in July 2000 only to find that when Welling United Football Club left the site a year later, the tennis club found themselves illegal tenants as Welling had no authority to sub-let! The CWS agreed the club could stay and fulfil its commitments, however, when new tenants arrived in August 2001

¹³ 6d is 6 old pence equivalent to 2 ½ pence in decimal currency.

the club found it could not agree to their terms and decided to leave. This turned out to be very fortunate as two years later the ground was up for sale again.

With no success in obtaining sufficient funds from the various organisations to start their club again, and with no wish to return to the courts of the University of Greenwich, the decision was taken to close the club and join with Crescent Lawn Tennis Club, a move that has proved very successful, and many thanks go to the members of the Crescent for the welcome they gave to New Eltham Tennis Club members.

Whilst the club was known as the RACS it won five North Kent championship titles. In 1966 it won the North Kent Cup Mixed doubles, and in 1969 it again won the NK Cup Mixed doubles and also the Men's singles and Men's doubles Cups. That year it also won the North Kent Men's doubles division A championship.

Over the last 15 years the club fielded as many as 15 teams in the North Kent Leagues with various degrees of success. In 1985 the Mixed 1 was promoted to the Premiership and retained its position until the club was closed. Ladies 1 was promoted to the top division in 1988 and apart from one year, also maintained its position. Men's 1 divided its time between the top two divisions.

As New Eltham, the club hosted the North Kent finals on three occasions, 1988, 1989 and again in 1995 and during that time it also had representatives in the finals of the ladies (twice), men's and mixed doubles events. The club also won the inaugural ladies doubles veterans' event in 1995.

Apart from its competitive side, New Eltham Tennis club always had a reputation for the excellent social tennis sessions it provided, and this has continued successfully at their new club.

The early information regarding the history of New Eltham Tennis club was taken from an article from the clubs newsletter written by the late Arthur Butler, who was club secretary for many years. Upon his death he bequeathed a sum of money to the club and this has been used to provide the bench which is now in situ alongside the tennis courts at Crescent Tennis Club.

REORGANISATION OF SIDCUP SPORTS CLUB AND SALE OF LAND.

By the late 1990s the SSC was in severe financial difficulties. The contributions from the constituent clubs plus the bar and other takings were insufficient to meet the running costs and a considerable debt had accrued. A solution presented itself in approaches from builders to sell them the tennis courts and the Development Committee was re-formed to take this forward. The Committee comprised: Colin Bensley (Chair); Mike Roques; Rod Gallacher; Simon Morre; Colin Parkins and Alan Brakefield. The original plan to move the tennis courts to the south field proved impossible because of restrictive covenants on building on all but the south field and plans proceeded on the basis of selling that field.

The Rugby Club offered to clear the debt on the understanding that a new constitution of SSC was accepted and that the sale of the south field for building was agreed. This constitution sought to streamline the main committee giving the Rugby Club overall control. The Tennis Club lost representation of this committee but is still represented on the subsidiary one.

There was little alternative to accepting this proposal – the club was near to closure – and approval was given at a special general meeting on 1st June 2000. One problem was the necessity to purchase and demolish two houses in Sydney Rd to gain access to the site. This was achieved, the field was sold to Rydon Homes for £1.86 million and plans prepared for the gutting and extension of the old clubhouse for new and renovated courts.

After slow progress through Bexley Council Planning Committee and despite objections from local residents, (see next page) planning permission was granted and work commenced in 2002.

There were constraints in that the development had to be completed in three years otherwise a penalty of £1 million would be levied by the council and that any money unspent would be subject to Capital Gains Tax (CGT). The club has joined CASC (Community Amateur Sports Club) which hopefully will enable reclaim of CGT and possibly secure other tax benefits.

The fine new clubhouse was officially opened by the Deputy Mayor on 5th June 2004. This building and fittings are of a very high specification and include ample changing rooms, a function room accommodating 250 people, two bars, a fully equipped fitness centre and a commercial standard kitchen. £1.65 million has been spent so far (2005).

The Club owed the SSC Development Committee a debt of gratitude for the time and energy they spent on this great enterprise.



SIDCUP Sports Club has won its battle with local people to redevelop part of its grounds for housing.

Nearly 200 objections from neighbours and the National Playing Fields Association opposed the club's plans to build 28 new houses on part of the playing fields in Sydney Road.

The club said it was the only way it could survive and improve

A major concern for local people and councillors at last week's planning meeting was the news the land had been used as a fill site.

Tests has shown the presence of heavy metals and methane gas. People who buy these home mill not have an automatic right to put up sheds and greenhouses because of possible dangers.

The developer, Rydon Homes, will have to produce plans for cleaning up the site before it can begin building.

Colin Parkins, the club treasurer, said the money from the sale of the land would be used to upgrade the clubhouse, develop the four sports which the club offers and enable it to work more closely with the community.



REFURBISHED AND EXTENDED CLUBHOUSE



NEW AND RENOVATED COURTS

From the proceeds of the land the Tennis Club was allocated £150,000 to develop and renovate the tennis courts.

Thanks to an immense amount of work by Chris Scarff, Chairman, the club has four new championship standard tarmac courts, two porous acrylic courts and two renovated tarmac courts and all with new surround netting. Two courts were lost to the carpark.



Chris Scarff

Planning permission was obtained for the floodlighting of four courts. This was funded by a loan from the LTA for 75% of the costs the remaining 25% was found by the club. This money was found by fundraising schemes throughout the club's centenary anniversary year 2005.

THE MATCH PROGRAMME

The earliest available fixture list, that for 1949, shows 20 matches, all friendlies, against six clubs but the next year the club entered the Kent Cup and there were 35 matches. The club entered the North Kent competitions in 1988.

What a contrast now! In the summer of 2004 there were 170 matches and in the winter of 2004/2005 there were over 60 matches.

There are 19 teams in the 2004 summer competition as follows:

KENT LEAGUE

Men's 1	Division 3A
Men's 2	Division 9
Ladies'	Division 6B
Ladies' Mid-week	Division 2
Mixed Mid-week	Division 1

NORTH KENT LEAGUE

Men's 1	Division A
Men's 2	Division C
Ladies' 1	Division A
Ladies' 2	Division D
Ladies' 3	Division C
Ladies' 4	Division G
Ladies' 5	Division E
Men's Vets 1	Division D
Men's Vets 2	Division E
Mixed 1	Division B
Mixed 2	Division E
Mid-week mixed Vets 1	Division A
Mid-week mixed Vets 2	Division B
Men's over 60	Division B



Gill Rafferty
Heroic Fixtures
Secretary



Julie Chandler
Ladies' Captain
2002/03/04/05



John Barnes
Men's Captain
2004/05

CRESCENT SUCCESS IN KENT LEAGUES

1928	Men's 1	Division 2	1990	Men's 2	Division 5
1931	Ladies'	Division 3	1993	Ladies' 1	Division 3 winter
1967	Mixed 1	Division 4	1994	Men's 2	Division 5
1968	Men's 2	Division 4	1995	Men's 1	Division 3
1969	Mixed 2	Division 4		Ladies' 1	Division 6
1970	Mixed 1	Division 3		Mixed 1	Division 2
	Mixed 2	Division 6	1996	Mixed 1	Division 1
1971	Mixed 2	Division 3 winter		Mixed 2	Division 4
1976	Men's 2	Division 6		Ladies' 1	Division 6 winter
1980	Men's 4	Division 8	1997	Mixed 2	Division 7 winter
1981	Ladies' 2	Division 3	1998	Ladies' 1	Division 6
1982	Men's 2	Division 6	2000	Mixed 1	Division 5 winter
1983	Mixed 1	Division 2	2004	Mixed 1	Division 5 winter
1989	Ladies' 1	Division 4		Ladies' Vets	Division 3 winter

NORTH KENT

Glenhurst played in the North Kent League and when their members joined Crescent in 1988, Crescent joined that league and took over their positions in the competition. 'Converted' Glenhurst players Russell Bruty and Peter Lewis won the Bell Cup. Mike Bowles and Jo Copp won the mixed Cup in 1988, and Russell Bruty and Jo Copp won the Mixed Cup in 1989.

NORTH KENT LEAGUE WINS						
1989	Mixed	Division A	Ladies' 1	Division D	Men's 1	Division A Winter
2002	Men's 1	Division B	Ladies' 4	Division H	Mixed 2	Division B
2003	Ladies' 2	Division 2 winter				
2004	Mixed 1 *	Division A	Mixed 2	Division E		

*Promoted to Premier League for 2005

New Eltham Tennis Club had been very involved in the North Kent , indeed as RACS they were founder members in 1936.

Malcom Fox was a North Kent Councillor and their treasure in 2005.

SOME WINNING TEAMS.



1961 MIXED DOUBLES TEAM

Tony Williams

Peter Dobson

John Cook

Dan Graves

Colin Ashdown

Betty Cook

Margaret

Rosemary Otter

Newdick



1970 KENT DIVISION 3 WINNERS

Peter Dobson

Peter Lee

Arthur Maxted

John Cook

Jack Lewis

Wendy Eastwood

Betty Cook

Topsy Donaldson

Vera Lewis



1976 KENT DIVISION 6 WINNERS CRESCENT MEN'S 2

Roger Wickham
Frank Stanton

Roy Scott
Ken Curran

Jim Haynes
Chris Lavis



1976 MEN'S SINGLES.

Winner John Cook

Runner up Jonathan Crust

John Cook's tenth win in the Men's Singles.

1976 CRESCENT MEN'S 2.





1983 KENT DIVISION 2 WINNERS

Pat Stanton	Trevor Cook	Vanessa Stanton	Jonathan Crust	Jan Francis	Arthur Macted
-------------	-------------	-----------------	----------------	-------------	---------------

TOURNAMENTS

It is clear that tournaments have been played since the very early days of the club. The singles and their trophies were described earlier. Strangely, the doubles events were handicaps and it was not until the early 1960s that open doubles were introduced. Thus there are elegant old silver trophies for the handicaps which equal those for the opens.

The open tournaments were played over two weeks and the handicaps extended over a longer period. It is not possible to discover all the winners of the open events and listed below are those we have.

COACHING

In June 2004 the club coach, Len Cooper, left the club to live and work in Bognor. In his two and a half years he had built a great rapport with the juniors, their parents, the adults he coached and local schools. The club was very sorry to see him leave.

A new coach, Tony Careswell was quickly appointed and a break avoided. He has built on and continued the excellent structures put together by his predecessor and provides a full coaching service which gives everyone the opportunity to continue to enjoy and improve their game.

He has wide experience and has coached juniors and adults at all levels from complete beginners to county standard.

He currently holds the LTA DCA (Development Coaching Award) coaching qualifications and is in the process of working towards the final part of his LTA CCC(Club Coach Award) qualifications. Originally from Taranaki, New Zealand he initially trained in Australia and is a member of the Australian Professional Coaches Association.

Details of coaching, performance squads etc., are given on the next page.



Tony Creswell



Sharon Lander

Junior Representative who worked closely with Tony Creswell.

JUNIORS

In the summer of 2004, the club had 120 juniors in coaching squads and, of these, 50 were full juniors members. The squads are run three every weekday evening and three on Saturdays.

Junior play is from 2 to 4pm on Sundays

League matches:

Junior teams were entered as follows in the North Kent League

Under 11 Boys Division C Came 3rd
Under 13 Boys Division C Won
Under 13 Boys Division D won 5/6
Under 15 Division B came 2nd

Under 15 Boys Division C Came 4th
Under 17 Boys Division B Came 2nd
Under 17 Girls Division A Came 2nd

These were very good results as it was the first time in competitive matches for most of them. The under 15 and under 17 boys played in a Men's team which could not be filled by senior members. They thoroughly enjoyed the experience and were complimented on their attitude.

Tournaments.

On the first Sunday in every month there is a very popular tournament. On the third Sunday there is a mini-tennis tournament open to other club members. Juniors also played in full club tournaments and performed with great credit. Siobhan Butler won the Ladies' Singles, there was a junior in each pair in the Men's Doubles Final (Arun Karla winning pair and Paul Chappel runner up) and a junior girl hat to pull out at a late stage.

The previous year Richard Langdon and Adam Lander were winner and runner up in the Road to Wimbledon tournament and thus were invited in 2004 to play against the winners from other clubs at Newstead Woods LTA ground with a chance, of the winner, to play at Wimbledon. Unfortunately neither was successful but it was a great experience for them.

Fun Days

These are very popular. One was arranged as a mini-Davis Cup with teams from four counties dressed in national colours with supporters to match.

Performance squads are run, one for 10 – 13 and another for 14 – 17.

There is one girl in each squad. They have one and a half hour sessions with fitness training and they are to be entered in as many outside tournaments as possible. This will mean a very heavy schedule for the parents. The club is lucky that the parents are so committed and also that in Sharon Lander, it has an extremely active Junior Representative.

This is a very important side because the juniors are the future of the club.

THE SOCIAL SIDE

Mid-week tennis is played mainly on Tuesday and Thursday mornings. Up to 40 people attend these very friendly sessions. Several mid-week lunches are enjoyed through the year, together with a mid-summer barbeque followed by a game of rounders. There is also a Mid-week Christmas lunch. These events are not limited to Mid-week members and all full members are welcome.

There is an annual Christmas Dinner Dance at which the tournament trophies are presented. It is hoped to run many social events throughout the year.



Francis Bland, the Social Secretary.





Mid-Summer Barbeque 1998



Alan Randall, membership secretary has done an excellent job in increasing the club's numbers.



Christmas Lunch 2004

MEMBERS OF LONG STANDING NOT PREVIOUSLY MENTIONED WHO ARE STILL AT THE CLUB (2005)

Betty Cook

Vice President. Joined in 1957, served as Assistant Secretary, Subscription Treasurer and Ladies' Captain. She won the Ladies Singles in 1966 and 1968



John Cook

President since 1986. Joined in 1958. Secretary 1964 to 1971. Also served as Men's Captain. He won the Men's Singles ten times between 1960 and 1976.

Arthur Maxted

Vice President. Joined 1959. Chairman 1983 to 1985. Also served as Match Secretary and Men's Captain. Won Men's Singles 1977.

Ivor Lewis

Joined in 1962

Ray Whitehouse

Joined in 1976. Committee member 1993 to 1994

Len Peach

Joined in 1978

Patsy Levitt

Joined 1981



Fleur Buckley

Joined 1982. Committee member 1989 to 1996. Member of the Association of British Tennis Officials

Here is Fleur on duty at Beckenham in 1990 (Also in picture Kevin Curran!!)



OFFICERS OF THE COMMITTEE 2004/2005

President	John Cook	
Honorary Vice Presidents	Mrs. B. Cook Mr. T. Cook Mr. M. Fox Mr. A. S. Maxted	Mr. J. Cook Mrs. W. Dobson Mr. J Hancock Mr. C. Stone
Chairman	Chris Scarff	
Secretary	<p>Gillian Quinney was secretary for a very busy five years and has done a great job. Her comprehensive presentations have earned the club grants and awards from Bexley Council and Kent LTA.</p> 	
Treasurer	<p>Barbara Scarff</p> 	
Men's Captain	John Barnes	
Ladies' Captain	Julie Chandler	
Match Secretary	Gill Rafferty	
Membership Secretary	Alan Randall	
Junior Representative	Sharon Lander	
Off Peak Representative	Francis Bland	
Social Secretary	Francis Bland	
Sidcup Sport Club Rep	Chris Scarff	

THE FUTURE (From 2005)

At the end of the first one hundred years the club finds itself in a very satisfactory position with 129 adult members and 47 junior members.

It has eight new and refurbished courts and with new surround netting and fittings, and a new club house with excellent changing facilities, a large function room, a fitness centre, bars and a high standard catering service.

In order to secure its future it is essential that people continue to come forward to run the club, and that they are given full support by the membership.



Watercolour by John Hancock.



Sidcup 1905

THE NEXT TWENTY YEARS...

By Graham Watson.

2020

Larry Woodman's move to Broadstairs was finally coming to fruition, so the hunt was on for another Chairman. Graham Watson, who had joined in 2012 was nominated, and was duly elected at the AGM in February.

It was in March of that year that the whole world changed. The World Health Organisation (WHO) declared a pandemic (COVID19). Information about a respiratory virus had been in the news for many months, but by March it had reached Britain. The Government introduced, what came to be called a 'Lockdown'. Essentially this meant, astonishing as it is, that people should not go to work. The whole economy shut down. It is very hard to believe, but even playing tennis was prohibited.

It was not until May that some outdoor sports were permitted again. Tennis (along with Golf) were now allowed. People were still not going to work if they didn't have to. Working from home proliferated, giving people the potential to play tennis more. This had the effect of increasing the club's membership.

In July of this year, we were awarded a grant of £6,750 from Sport England. This was specifically to help us get over the financial problems we were potentially having because of the pandemic. It helped our financial situation immensely. Also with the help of NB tennis, and Bernie Adams (Treasurer) we managed to increase our membership.

Charity application